



IMPERIAL COUNTY

Behavioral Health Services

MENTAL HEALTH & SUBSTANCE USE RECOVERY

EMERGENCY EVACUATION PLAN

FY 2022-2023

Prepared
by
Adolfo Estrada BHM
Emergency Disaster Coordinator

TABLE OF CONTENTS

Scope	Page	3
Conditions or emergency requiring an evacuation	Page	3-4
A clear chain of command	Page	5
Procedures for emergency evacuation	Page	5
Evacuation assembly point	Page	5
Emergency evacuation responsibilities	Page	6
ICBHS Assembly Evacuation Points Table	Page	8
Specific evacuation procedures for high-rise buildings	Page	9
Assisting visitors and clients to evacuate	Page	9
Special equipment for emergency evacuation plan	Page	9
Post incident	Page	10
Scheduled evacuation drills	Page	10
Training	Page	10-11
Appendix A. Emergency Response Teams	Page	12-17
Appendix B. Assembly Evacuation Points by Location	Page	18 -

EMERGENCY EVACUATION PLAN

SCOPE

In the event of an emergency, actions taken in the first few minutes are vital. An early warning to employees to evacuate, shelter in place, or go into lockdown can save lives. An accurate and comprehensive call for assistance to public emergency services will assist the dispatcher in sending the appropriate responders and equipment to the scene. The skills of an employee who has received training in first aid and CPR can save a person's life. An employee with knowledge of building and process systems can help control a leak and minimize environmental damage.

The Emergency Evacuation Plan is a dynamic document that will be updated at least quarterly or as necessary. As required by changes in employee status or other circumstances, training will be provided to designated floor leaders, section leaders, etc.

PURPOSE

Imperial County Behavioral Health Services will be required to ensure the safety of all clients, employees, and visitors at all times. The purpose of this procedure is to: (1) ensure the safety of staff, clients, and visitors in the event of an emergency evacuation; and (2) evacuate all clients, staff, and visitors to a safe area in an organized and controlled manner; and (3) ensure that everyone is evacuated from the building to the designated meeting area as soon as possible.

CONTENT

ICBHS Emergency Evacuation Plan will include the following components 12 key components:

1. Activation:

Who:

Evacuation procedures can be activated by order of the

1. County Executive Officer
2. Department Head
3. Immediate supervisor or his/her designate
4. Senior management employee at the location
5. Fire Officer-in-Charge

2. When:

The following conditions can create an emergency situation:

A. Natural Hazards

Meteorological –

Flooding, Dam/Levee Failure, Severe Thunderstorm (Wind, Rain, Lightning, Hail), Tornado, Windstorm, Hurricanes and Tropical Storms, Winter Storm (Snow/Ice)

Geological –

Earthquake, Tsunami, Landslide, Subsidence/Sinkhole, Volcano

Biological –

Pandemic Disease, Foodborne Illnesses

B. Human Caused Hazards

Accidents –

Workplace Accidents, Entrapment/Rescue (Machinery, Water, Confined Space, High Angle), Transportation Accidents (Motor Vehicle, Rail, Water, Air, Pipeline), Structural Failure/Collapse, Mechanical Breakdown.

Intentional Acts –

Labor Strike, Demonstrations, Civil Disturbance (Riot), Bomb Threat, Lost/Separated Person, Child Abduction, Kidnapping/Extortion, Hostage

Incident, Workplace Violence, Robbery, Sniper Incident, Terrorism (Chemical, Biological, Radiological, Nuclear, Explosives), Arson, Cyber/Information Technology (Malware Attack, Hacking, Fraud, Denial of Service, etc.)

C. Technological Hazards

Information Technology –

Loss of Connectivity, Hardware Failure, Lost/Corrupted Data, Application Failure

D. Utility Outage –

Communications, Electrical Power, Water, Gas, Steam, Heating/Ventilation/Air Conditioning, Pollution Control System, Sewage System.

E. Fire/Explosion –

Fire (Structure, Wildland), Explosion (Chemical, Gas, or Process failure)

There are 3 Categories of Fire Evacuation:

- Simultaneous Evacuation -
 - In the event of a fire the building's alarm system will alert all staff they can evacuate the building.
- Vertical or Horizontal Phased Evacuation –
 - In the event of an isolated fire where exits are blocked a horizontal or vertical evacuation to higher areas of a structure may be the only way to shelter individuals in a safe smoke room or compartment.
- Silent Alarm Evacuation –
 - This is a “silent evacuations” that is initiated without the use of an alarm.

There are two main reasons why a silent evacuation might be used.

1. A sudden alarm can lead the evacuees to move toward the fire.
2. Silent evacuations can provide staff with information about the location and nature of the emergency, and evacuees can be moved in a managed manner.

F. Hazardous Materials –

Hazardous Material spill/release, Radiological Accident, Hazmat Incident off-site, Transportation Accidents, Nuclear Power Plant Incident, Natural Gas Leak Supply.

G. Chain Interruption –

Supplier Failure, Transportation Interruption

Staying indoors may be a safer option in some situations. An example would be the occurrence of extreme weather conditions or the presence of dangerous chemicals in the outside environment. If this is the case, a designated interior room by location where visitors, employees may gather.

3. A clear chain of command

The Director is the designated Mental Health authority for the County of Imperial. In the event the Director is incapacitated or unable to respond the following line of succession will identify the director's designee in his absence.

	Name	Title	Work #	24 Hour #
Primary	Leticia Plancarte	Director	442-265-1604	760-996-3339
1 st Alternate:	Gabriela Jimenez	Assistant Director	442-265-7910	760-427-3249
2 nd Alternate:	Maria Ruiz	Deputy Director	442-265-1541	760-427-1132
3 rd Alternate:	Nancy Del Real	Deputy Director	442-265-1585	760-604-1975
Disaster Crisis Coordinator	Adolfo Estrada	Adolfo Estrada	442-265-1612	760-482-8070
Asst. Disaster Crisis Coordinator	Scott Dudley	Scott Dudley	442-265-7323	760-455-9034

4. Procedures for emergency evacuation

When a building alarm sounds, or evacuation procedures are activated, everyone is required to evacuate the building. The evacuation process will be initiated by a continuous warning siren from the fire alarm.

In order to ensure that staff members are properly trained regarding the roles and responsibilities, emergency evacuation and fire drill exercises will be conducted.

Staff Actions: Initial Emergency Notification

- Close your door as you leave.
- If possible, know at least two escape routes from wherever you are.
- If smoke or flame is detected, and no alarm is sounding, alert others as you exit, keep low to the floor.
- During the evacuation, go to the nearest exit stairwell.
- Use stairway to exit the building.
- Leave the building immediately.
- Once outside, walk to designated Emergency Assembly Point (EAP).
- Keep streets and walkways clear for emergency vehicles and personnel.
- Electricity and gas should be turned off at the appropriate main switch whenever possible.
- Staff will carry out their duties and report immediately to the EAP to have their name checked against the staff list.

5. Assembly Evacuation Point

The Assembly Evacuation Point (AEP) is a location where staff, visitors and clients can gather in the event of fire/leak/explosion and other emergency to ensure everyone is in a designated safe area. All persons missing during an evacuation will be reported to the Fire/Police via the AEP. Staff will take instruction from the BH Director, Disaster Crisis Coordinator or emergency responses personnel with regards to missing clients, visitors, and/or staff. No person is to attempt to re-enter the building premises unless cleared by emergency response personnel or designee.

**A listing of all ICBHS Assembly Evacuation Points by location are attached to this plan.*

The following guidelines are to be followed:

- Staff is to assist Emergency Services personnel on request.

- The Fire/Police or Assembly Point Designee must give permission before anyone leaves the AEP.
- A secondary Emergency Evacuation Assembly Area will need to be considered on site in the event that toxic fumes or other hazardous situation affects the safety of people at the first assembly area.

6. Emergency Evacuation Responsibilities

There are specific duties assigned to key ICBHS staff during emergency evacuations:

ICBHS key staff are identified as:

- Staff who detects fire or emergency
- Designated Floor Leader
- Designated Section Leader/Assembly Point Designee
- 800mhz Primary Radio Staff
- Disaster Crisis Coordinator
- Staff/Clients/Visitors
- Behavioral Health Director

Responsibilities are as follows:

Position	Emergency Evacuation Responsibilities
Staff Who Detects Fire or emergency	Alert everyone in the area to begin evacuation
Staff Near a Fire Alarm	Depending on the emergency, pulls fire alarm, if possible.
Designated Floor Leader	Will lead staff, clients and visitors out the safest exit as indicated on the posted evacuation plan, ensuring this is done in a calm and orderly manner. Will evacuate Staff / Clients /Visitors with disabilities or limited mobility. Designated Floor Leader will also check each room within the facility to ensure that all staff, clients, and visitors have evacuated the facility.
Designated Section Leader/Assembly Point Designee	Will bring the Fire/Earthquake Attendance Roster to the AEP meeting location and take roll of the staff present at the time of the emergency. If staff/client/visitor not accounted for Section Leader is to notify the designated floor leader, Radio Primary Staff and the Disaster Crisis Coordinator.
800mhz Radio Primary Staff	Via the 800Mhz radio will report to Disaster Crisis Coordinator or BH Director all staff/client/visitor accounted and/or not accounted for.
Disaster Crisis Coordinator	Will notify the Behavioral Health Director and/or the County Executive Office of disaster and provide a status on staff by location.
Staff /Clients /Visitors	Will remain at meeting location and re-enter the facility only if the Fire Department official in charge at the scene indicates it is safe to do so.

Behavioral Health Director/Designee	Will authorize employee to go home or assign alternative work sites for employees.
Disaster Crisis Coordinator	Will complete the necessary incident report(s) and forward them over to the Behavioral Health Director.

****See appendix A – Emergency Response Teams by city and program. Document identifies Section and Floor leaders by name and location.*

ICBHS Assembly Evacuation Points by City and Location

THIS SPACE IS BLANK

BRAWLEY		Programs	Assembly Point
1	1401 B St.	Vista Sands Brawley	Staff will proceed to an open field to the west of the building
2	1535 Main St.	YAYA Anx. & Dprsn/MHSA FSP	Staff will use the exit doors located in the back of the building and proceed to the north facing parking lot located directly behind the building.
3	195 S. 9th St.	Team 6	Staff will proceed to the west parking lot.
4	205 Main St.	Wellness Center	Staff will proceed to the north parking lot.
5	229 Main St.	Adult Anx. & Depression	Staff will proceed to the front parking area.
6		MHSA FSP	

CALEXICO		Programs	Assembly Point
7	101 Hacienda Suite A, B, & C	YAYA /MHSA FSP	Staff will proceed to the front of the parking lot
		SUD Adolescent	
		FRC/Team 4	
8	1501 W. Imperial Ave.	Adlt. AnxDepClnc/MHSA FSP	Staff will proceed to the parking north of the building.
9	2300 Rockwood Ave	KG Elmntry/Vista SandsCalexico	Staff will proceed to the west parking lot in front of school
10	25 East 3rd St.	SUD Adult Clinic	Staff will proceed to the north parking lot.

EL CENTRO		Programs	Assembly Point
11	120 N. 8th St.	Children's Adm/Team 5	South parking lot.
12	1295 State St./Menville Bldg (1st & 2nd Floor)	YAYA EC FSP, A&D Team 1 and Team 2, Adm,Jvnl Srcvs, HOPE Program	1st and 2nd floor staff will use exit doors and proceed to the north parking area.
13	1530 S. Waterman	De Anza Elmntry Vista Sands El Centro	Staff proceeds to west of building
14	1699 Main St (Ste A)	MHSA -TESS, MHSA - CESS	South parking lot.
15	1001 Brighton	ALHP	TBA
16	102 N. 8th St./Main Adm Bldg.(3 flrs)	Adminisitation Information Systems MHTU	Staff from 2 nd and 3 rd Floor will proceed to the west/east parking lot; 1 st Floor, staff will proceed: to the east parking lot. Triage with 51/50 clents: Will proceed to the far east parking lot away from general audience.
17	2695 S. 4th St (1st & 2nd floor)	Adlt. MHSA FSP, WLN Cntr, SUD Adlts, Adlt Adm, Trnspt	Staff from Suites A, E, and F will proceed to the west parking lot; Suites B, C, and D staff will proceed: to the east parking lot.
18	313 Waterman, East & West	Accounting and Purchasing Adults Anx Depression	Staff will proceed to south parking lot behind the building.
19	315 Waterman	SUD Adolescents	
20	651 Wake Ave.	Team 12, CCT, Stff Dvlpmnt, Outreach	Staff will proceed to the East parking lot.
21	801 Broadway St	MHTU Adminstration	Staff will proceed to the south parking lot.

SALTON CITY		Programs	Assembly Point
22	1209 Van Buren St. Suite #4	Salton City Outpatient Clinic	Staff will proceed to the parking lot

WINTERHAVEN		Programs	Assembly Point
23	676 Baseline Rd Winterhaven	San Pasqual FRC (childrens/adults)	Staff will proceed to the west parking lot/dirt lot

7. Specific evacuation procedures for high-rise buildings

Evacuation plans for each floor will be posted in a designated location. The posting will identify who will be responsible for getting people out, including floor leaders and section leaders as well diagrammed evacuation maps by floor and ICBHS Assembly Evacuation Points by location.

8. Assisting visitors and clients to evacuate

During an evacuation, the Section Floor leader is responsible for guiding clients and visitors to the safest exit, as indicated on the evacuation plan, while maintaining calm and orderly conduct. Whenever necessary, the Section Floor Leader will assist staff, clients, and visitors with disabilities in evacuating the building. The Designated Floor Leader will also verify that all staff, clients, and visitors have evacuated each room within the facility.

If there are any non-employees in the building, the visitor log can be kept to keep track of them and check them off as they are located.

Clients in immediate danger should be moved first. They should follow a lead nurse into a safe area. Move patients who are closest to danger first (non-ambulatory and ambulatory).

9. Special equipment for emergency evacuation plan

An Emergency Evacuation First Aid Kit will be set up in designated meeting assembly area if needed. It will be suitably labelled, in clear view and readily accessible.

Primary First Aid Kit Location: 202 North 8th Street El Centro, Ca 92243
Backup First Aid Kit Location: 2695 South 4th Street El Centro, Ca 92243
& 1535 Main Street, Brawley, Ca 92227

- Primary Team Kit: (Location: 202 North 8th Street El Centro, CA 2nd floor)**
- ✓ 1 set of office supplies, i.e., paper tablets, pens, pencils, markers, scissors, tape, and file folders, portable file storage box.
 - ✓ 4 Shirts/ Vests/ Aprons ("Counselor printed on the back")
 - ✓ 1 First Aid Kit (for personal use by team member)
 - ✓ 4 sets of appropriate forms for staff to keep record of time/ mileage/ expenses
 - ✓ 4 walkie talkie radios
 - ✓ 1 set Batteries for equipment: Calculators, flashlights, walkie talkies
 - ✓ 4 flashlights (1 per person)
 - ✓ 1 set of County and State road maps (1 set per team)
 - ✓ Waterless hand cleaner or sanitizer
 - ✓ ICBHS telephone list/ cell phone list
 - ✓ 4 Resource Directories (for use in local incidents only)
 - ✓ 1 set of multi-topic informational brochures (100 copies per topic)
 - ✓ 1 folding table and 4 folding chairs
 - ✓ Ice Chest
 - ✓ Personal protective equipment (gloves, spill kits, eye protection, gowns)
 - ✓ Storage container(s) for all materials above

Other ICBHS Resources:

- ✓ Portable Shade Canopies
- ✓ Lab top computer (with wireless internet capability)
- ✓ Cell phone
- ✓ 800mghz Radio
- ✓ Dual Band 800mghrz Radio for designated to communicate with CEO Executive Office personnel
- ✓ County Vehicles

In some emergency situations, personal protective equipment (PPE) will be available. These include, but aren't limited to:

- ✓ Safety glasses, goggles, or face shields
- ✓ Hard hats and safety shoes
- ✓ Chemical suits, gloves, hoods, and boots
- ✓ Special body protection for abnormal environmental conditions

Make sure you have any required emergency equipment on-hand and well-stocked, and clearly mark storage locations of that equipment in your emergency evacuation plan.

10. Post Incident

After the incident has been resolved, the Fire/Rescue Department will release the building to the Facility Leadership (BH Director, Deputy Director, Behavioral Health Manager, or Supervisor, depending on the location). Upon re-entry, Facility Leadership will declare all clear, or all clear with conditions to returning staff, visitors, or clients and reenter the building.

Employees should check for others with disabilities or other special needs on their way into the building, and assist them as much as possible.

11. Scheduled Evacuation Drills

Each fiscal year, ICBHS will conduct a minimum of four (4) evacuation drills. At least two of the four evacuation drills will be conducted with the assistance of the local fire department. The Emergency Response Coordinator will plan and coordinate evacuation drills with the approval and assistance of the BH Director or designee and Facility Leadership for each location.

In order to alter the behavior of employees, different scenarios will be created as part of the exercise. For example: an alternative route to the Emergency Evacuation Assembly Area could be blocked deliberately.

After each evacuation drill, a debriefing will be conducted and documented in order to gain feedback and determine the degree of success. Following each emergency evacuation drill, formal evaluation forms may be submitted as a feedback tool.

12. Training

Emergency Evacuation training will be a mandatory annual component of ICBHS' overall training program. Center for Clinical Training (CCT) at ICBHS will create, schedule, and maintain a training roster that includes the date, time, name, and title of employees attending the training.

All employees of the ICBHS will be provided with Emergency Evacuation training. The training will at the very least explain and demonstrate the evacuation process in

full detail to all employees. This training is intended to ensure that all ICBHS staff understand their individual responsibilities and the importance of ICBHS' emergency evacuation drills.

Emergency Evacuation training will be provided:

- Once the plan has been implemented.
- Hire a new employee.
- Whenever an employee's responsibilities or designated actions under the plan are changed.
- Every time a change is made to the plan.
- Introduce new equipment, materials, or processes into the workplace that affect evacuation routes; f
- Change the layout or design of the facility
- Revise or update your emergency procedures.
- At the time of the employee's orientation, the supervisor will review the Emergency Evacuation Plan at length with the employee in order to ensure that they are familiar with the portions of the plan that will be relevant to them in case of an emergency evacuation.
-

Section and floor leaders will receive specific training. Topics covered in the training include, but are not limited to:

- Evacuate or shelter
 - carefully assess the emergency.
- Understand clearly mapped out evacuation procedures
 - locate the assembly evacuation point for your specific location
- Access to necessary safety equipment.
- Accounting for visitors, employees and clients On-Site.
 - ensure assistance to staff, clients, and visitors with disabilities or limited mobility in evacuating using evacuation wheelchairs, canes, and walkers

In addition the following will be part of the training process:

- The written plan will be kept at the workplace and made available for employee review.
- Evacuation plans for each floor will be posted in a designated location. The posting will identify who will be responsible for getting people out, including floor leaders and section leaders as well diagrammed evacuation maps by floor and ICBHS Assembly Evacuation Points by location.
- The written plan will be kept at the workplace and made available for employee review.

All staff training curriculums for the Emergency Evacuation Plan will be developed, updated and maintain by CCT. Additionally the Emergency Evacuation Plan will updated annually

Appendix A: Emergency Response Teams

Administration			
Admin/Access/HR/Fiscal/Payroll/IS			
202 N 8th St., El Centro, CA 92243 (3rd Floor)			
Designee	Section/Floor	Lead/Backup	Contact #
Maria Garfias	Section	Lead (East Side)	442-265-1638
Norma Amavizca	Section	Backup (East Side)	442-265-1622
Melissa Mata	Floor	Lead (East Side)	442-265-1658
Julyssa Soto	Floor	Backup (East Side)	442-265-1591
Mary Hernandez	Section	Lead (West Side)	442-265-1601
Veronica Ortiz	Section	Backup (West Side)	442-265-1606
Marcy Sesma	Floor	Lead (West Side)	442-265-1605
Chris Pacheco	Floor	Backup (West Side)	442-265-1600
Medical Records/Contracts/PAU/QM/Patient Rights/Compliance (2nd Floor)			
Designees	Section/Floor	Lead/Backup	Contact #
Emily Rivera	Section	Lead (East Side)	442-265-1652
Guadalupe Gradillas	Section	Lead (East Side)	442-265-1553
Marlene Ortiz	Section	Backup	442-265-1551
Sonia Contreras	Floor	Lead	442-265-1567
Rosalva Aramburo	Floor	Backup	442-265-1651
Accounting/Purchasing			
313 S Waterman Ave., El Centro, CA 92243			
Designees	Section/Floor	Lead/Backup	Contact #
Rafael Loo	Section	Lead (East Side)	442-265-7387
Melissa Valencia	Section	Backup (East Side)	442-265-7385
Armando Garcia	Floor	Lead (East Side)	442-265-7389
Christian Gonzalez	Floor	Backup (East Side)	442-265-7388

Mental Health Triage & Engagement Services			
Mental Health Triage Unit			
202 N 8th St., El Centro, CA 92243 (1st Floor- West Side)			
Designees	Section/Floor	Lead/Floor	Contact #
Jeannette Bayardo	Section	Lead	442-265-1522
Alejandro Pineda	Section	Backup	442-265-1523
Michelle Villarreal	Floor	Lead	442-265-1537
Blanca Cazares	Floor	Backup	442-265-1641
Casa Serena			
202 N 8th St., El Centro CA 92243 (1st Floor East Side)			
Designees	Section/Floor	Lead/Floor	Contact #
Suhey Castillo	Section	Lead	442-265-1533
Adriana Vega	Section	Backup	442-265-1579
Jessica Pineda	Floor	Lead	442-265-1535
Jose Alvarado	Floor	Backup	442-265-1640
MHTES Administration/CCMU			
801 Broadway Ave., El Centro, CA 92243			
Designees	Section/Floor	Lead/Backup	Contact #
Herlinda Lopez	Section	Lead	442-265-7928
Connie Aguilar	Section	Backup	442-265-7922
Jose Alvarez	Floor	Lead	442-265-7932
Stephany Ramos	Floor	Backup	442-265-7924
TESS/CESS/Conservatorship/ MHTA-PIER			
1699 W Main St., El Centro, CA 92243			
Designees	Section/Floor	Lead/Backup	Contact #
Maria Arias	Section	Lead	442-265-7221
Carlos Velasquez	Section	Backup	442-265-7203
Paola Beltran	Floor	Lead	442-265-7200
Norma Avila	Floor	Backup	442-265-7226

Children Services			
Admin/Team 5			
120 N 8th St., El Centro, CA 92243			
Designees	Section/Floor	Lead/Backup	Contact #
Maribel Rodriguez	Section	Lead	442-265-1694
Carla Banda	Section	Backup	442-265-1687
William Murgia	Floor	Lead	442-265-1670
Alfonso Ruiz	Floor	Backup	442-265-1670
Team 12			
651 Wake Ave., El Centro, CA 92243			
Designees	Section/Floor	Lead/Backup	Contact #
Marlena Derrick	Section	Lead	442-265-7405

Claudia Ramirez	Floor	Lead	442-265-6445
Belkys Cota	Floor	Backup	442-265-7418
Team 4			
101 Hacienda Dr., STE C, Calexico, CA 92231			
Designees	Section/Floor	Lead/Backup	Contact #
Valerie Balcemeda	Section	Lead	442-265-6445
Yahaira Rodriguez	Section	Backup	442-265-6449
Team 6			
195 S 9th St., Brawley, Ca 92227			
Designees	Section/Floor	Lead/Backup	Contact #
Lorena Valenzuela	Section	Lead	442-265-5083
Olivia Gutierrez	Section	Backup	442-265-5082
Amelia Lopez	Floor	Lead	442-265-5093
Viridiana Rocha	Floor	Backup	442-265-5090
Vista Sands Brawley			
1401 B St., Brawley, CA 92227			
Designees	Section/Floor	Lead/Backup	Contact #
Andrew Wells	Section/Floor	Lead/Backup	442-265-7240
Clerical Staff	Section/Floor	Lead/Backup	442-265-7240
Vista Sands Calexico			
2300 Rockwood Ave., CA 92231			
Designees	Section/Floor	Lead/Backup	Contact #
Alejandra Soto	Section/Floor	Lead/Backup	442-265-7240
Vista Sands El Centro			
1530 Waterman Ave., El Centro, CA 92243			
Designees	Section/Floor	Lead/Backup	Contact #
Claudia Ramirez	Section/Floor	Lead	442-265-7235
Clerical Staff	Section/Floor	Backup	442-265-7235

Adult Services			
Adult Admin/Transportation/Adult EC MHSA FSP/Wellness Center/Recovery/SUD and SUD Admin			
2695 S 4th St., El Centro, CA 92243			
Designees	Section/Floor	Lead/Backup	Contact #

Richard Webster	STE A- Section 1 st Floor	Lead	442-265-7645
Aida Castro	STE A- Section 1 st Floor	Backup	442-265-7645
Jessica Mitchell	STE B- Section Clinic	Lead	442-265-7604
Fayanie Rabb	STE B-Section Clinic	Backup	442-265-7605
Claudia Castillo	STE C-Section 1 st Floor	Lead	442-265-7637
Maria Martinez	STE C-Section 1 st Floor	Backup	442-265-7634
Matthew Smith	STE A & B Floor 1 st Floor	Building Lead	442-265-7616

Arlene Morales	STE A & B Floor 1 st Floor	Building Backup	442-265-7891
Vicente Ramirez	STE C Section 2 nd Floor	Lead	442-265-7895
Olivia Delgado	STE C Section 2 nd Floor	Backup	442-265-7912
Marisol Osuna	STE D&E Section 2 nd Floor	Lead	442-265-7909
Gabriela Izaguirre	STE D&E Section 2 nd Floor	Backup	442-265-7885
Victor Torres	STE C, D, & E 2 nd Floor	Building Lead	442-265-7909
Victoria Mansfield	STE C, D, & E 2 nd Floor	Building Backup	442-265-7909
Adult EI Centro Anxiety & Depression			
313 Waterman Ave., EI Centro, CA 92243			
Designees	Section/Floor	Lead/Backup	Contact #
Lizette Rodriguez	Section	Lead	442-265-6343
Denise Velasquez	Section	Backup	442-265-6362
Marie Arroyo	Floor	Lead	442-265-6361
Valerie Salgado	Floor	Backup	442-265-6345
Adult Brawley Anxiety & Depression/FSP			
229 Main St., Brawley, CA 92227			
Designees	Section/Floor	Lead/Backup	Contact #
Nadine Ortiz	Section	Lead	442-265-5114
Emmanuel Mejia	Section	Backup	442-265-5061
Elizabeth	Floor	Lead	442-265-5139
Adriana Benitez	Floor	Backup	442-265-5120
Adult Brawley Wellness Center			
205 Main St., Brawley, CA 92227			
Designees	Section/Floor	Lead/Backup	Contact #
Cindy Loreda	Section	Lead	442-265-5043
Leticia Lucatero	Section	Backup	442-265-5036
Adrian Celis	Floor	Lead	442-265-5043
Lizett Aguilar	Floor	Lead	442-265-5033
Designees	Section/Floor	Lead/Backup	Contact #

FRC San Pascual			
676 Baseline Rd., Winterhaven, CA 92283			
Designees	Section/Floor	Lead/Backup	Contact #
Nathan Miller	Section	Lead	442-265-6346
Marie Arroyo	Section	Backup	442-265-6361
Nathan Miller	Floor	Lead	442-265-6346
Marie Arroyo	Floor	Backup	442-265-6361
Adult Calexico SUD Treatment			
25 e 3rd St., Calexico, CA 92231			
Designees	Section/Floor	Lead/Backup	Contact #
Alejandra Hernandez	Section	Lead	442-265-6201
Liliana Niebla	Section	Backup	442-265-6203
Maribel Castro-Alba	Floor	Lead	442-265-6220
Alejandra Hernandez	Floor	Backup	442-265-6201
Adolescent Calexico SUD Treatment Program			
101 Hacienda Ave., STE B, Calexico, CA 92231			
Designees	Section/Floor	Lead/Backup	Contact #
Ana Coronado	Section	Lead	442-265-6413
Blanca Buckner	Section	Backup	442-265-6216
Christen Magana	Floor	Lead	442-265-6416
Adolescent EI Centro SUD Treatment Program			
315 S Waterman Ave., EI Centro, CA 92243			
Designees	Section/Floor	Lead/Backup	Contact #
Patricia Bravo	Section	Lead	442-265-7274
Hazel Avalos	Section	Backup	442-265-7265
Ana Contreras	Floor	Lead	442-265-7265

Youth & Young Adults Services			
Admin/YAYA EC Anxiety & Depression/YAYA EC FSP/YAYA HOPE/Juvenile Services			
1295 W State St., EI Centro, CA 92243			
Designees	Section/Floor	Lead/Backup	Contact #
Mia Dhillon	Section	Lead 1 st Floor	442-265-1920
Designees	Section/Floor	Lead/Backup	Contact #
Ana Fernandez	Section	Backup 1 st Floor	442-265-1917
Marcos Perea	Floor	Lead 1 st Floor	442-265-1950
Maricruz Bermudez	Floor	Backup 1 st Floor	442-265-1927
Lourdes Mendez	Section	Lead 2 nd Floor	442-265-1967
Angela Maya	Section	Backup 2 nd Floor	442-265-1941
Bianca Lopez	Floor	Lead 2 nd Floor	442-265-1947
Lupita De la Rosa	Floor	Backup 2 nd Floor	442-265-1955

YAYA Brawley Anxiety & Depression/FSP			
1535 E Main St., Brawley, CA 92227			
Designees	Section/Floor	Lead/Backup	Contact #
Mercy Valenzuela	Section	Lead	442-265-5004
Anna Lopez	Section	Backup	442-265-5002
Elizabeth Van Zant	Floor	Lead	442-265-5023
Marie Cabrera	Floor	Backup	442-265-5022
YAYA Calexico Anxiety & Depression/FSP			
101 Hacienda Dr., STE A, Calexico, CA 92231			
Designees	Section/Floor	Lead/Backup	Contact #
Analilia Mendoza	Section	Lead	442-265-6397
Angelica Garcia	Section	Backup	442-265-6400
Jessica Aviles	Floor	Lead	442-265-6383
Roxanna Palacios	Floor	Backup	442-265-6394

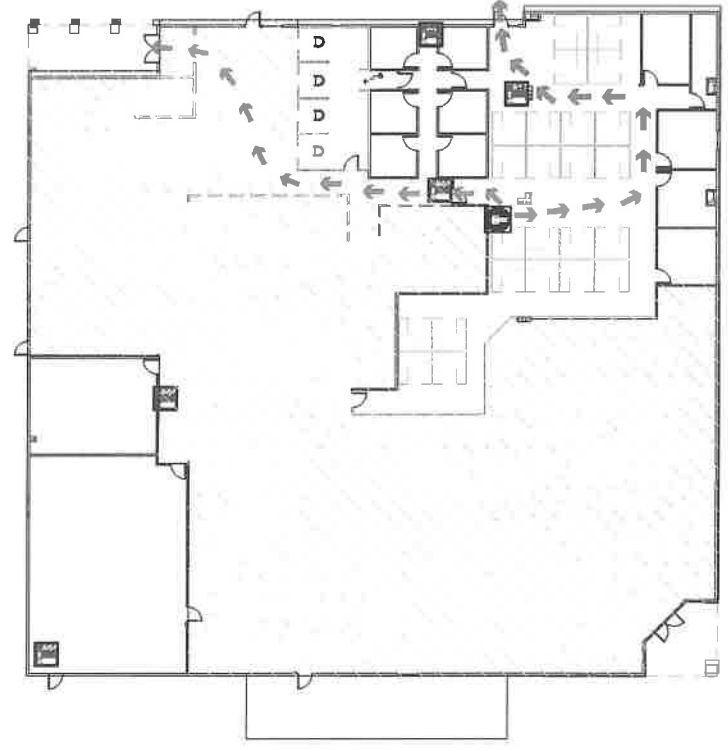
APPENDIX B
ICBHS Assembly Evacuation Plans
By Location



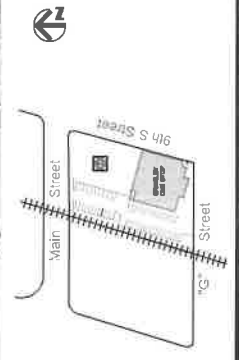
EVACUATION PLAN



SOCIAL SERVICES
FLOOR PLAN



ASSEMBLY AREA PLAN



SYMBOLS KEY

	You are here		Fire Extinguisher
	Primary Exit Route		Fire alarm call point
	Secondary Exit Route		Fire Hose
	Emergency Exit		Fire Alarm Annunciator Panel
	Evacuation Assembly Point		

EVACUATION PROCEDURES

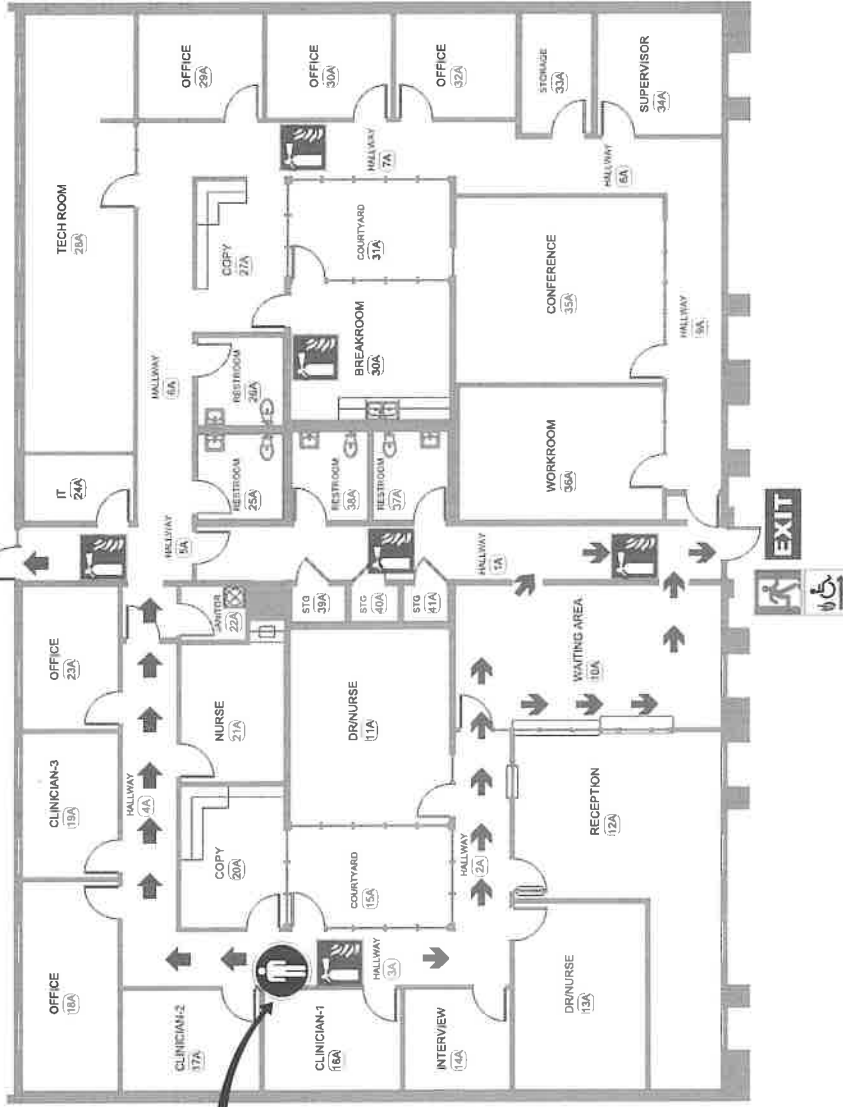
- Proceed directly to your assembly point
- DO NOT stop to collect personal belongings
- DO NOT use elevators or lifts
- DO NOT re-enter the building until informed it is safe to do so.
- CALL the emergency number 911

SOCIAL SERVICES
860 MAIN STREET
BRAWLEY, CA 92227

REVISIONS
01-04-16 JG
10-12-16 JG

EMERGENCY EVACUATION PLAN

HALLWAY 3A



You Are Here

LEGEND

- You Are Here
- Primary Exit Route
- Secondary Exit Route
- Fire Extinguisher
- Emergency Exit
- Emergency Accessible Exit
- Emergency Assembly Area
- Room Name & Number

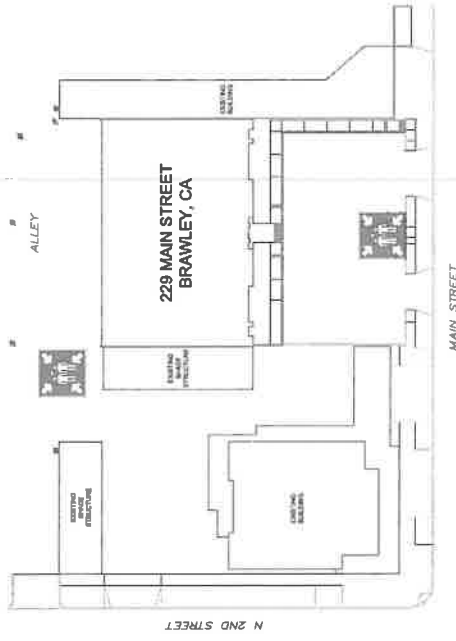
IN CASE OF AN EMERGENCY CALL 911

EVACUATION PROCEDURES

Leave the building by the Emergency Exit

- Proceed directly to your assembly point
- DO NOT stop to collect personal belongings
- DO NOT re-enter the building UNTIL informed it is safe to do so.

EVACUATION ASSEMBLY AREA



ADDRESS

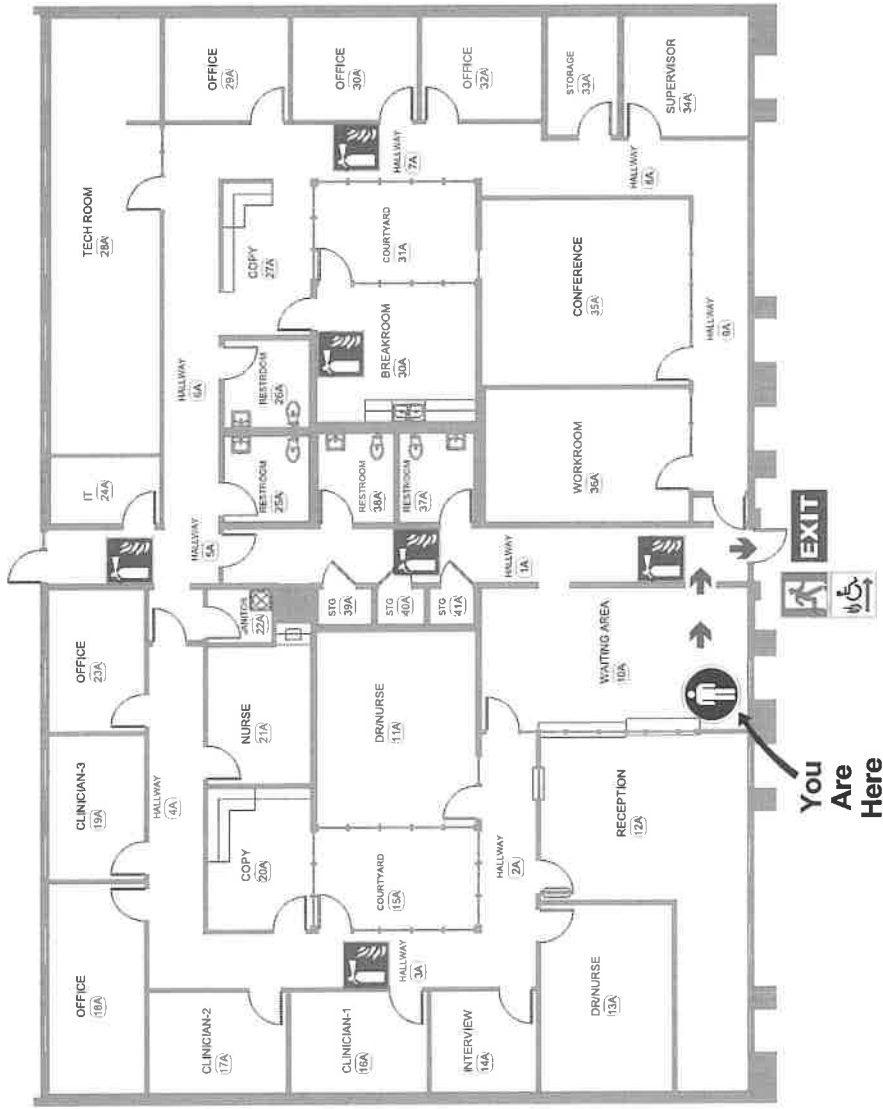
**BEHAVIORAL HEALTH
229 MAIN STREET, BRAWLEY**



REVISED:
JL 02.24.20

EMERGENCY EVACUATION PLAN

WAITING AREA - ROOM 10A



LEGEND

- You Are Here
- Primary Exit Route
- Secondary Exit Route
- Fire Extinguisher
- Emergency Exit
- Emergency Accessible Exit
- Emergency Assembly Area

00000 (#)

Room Name & Number

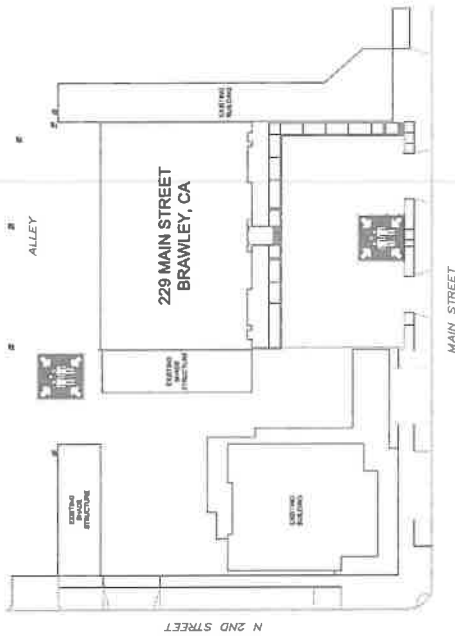
IN CASE OF AN EMERGENCY CALL 911

EVACUATION PROCEDURES

Leave the building by the Emergency Exit

- Proceed directly to your assembly point
- DO NOT stop to collect personal belongings
- DO NOT re-enter the building UNTIL informed it is safe to do so.

EVACUATION ASSEMBLY AREA



ADDRESS

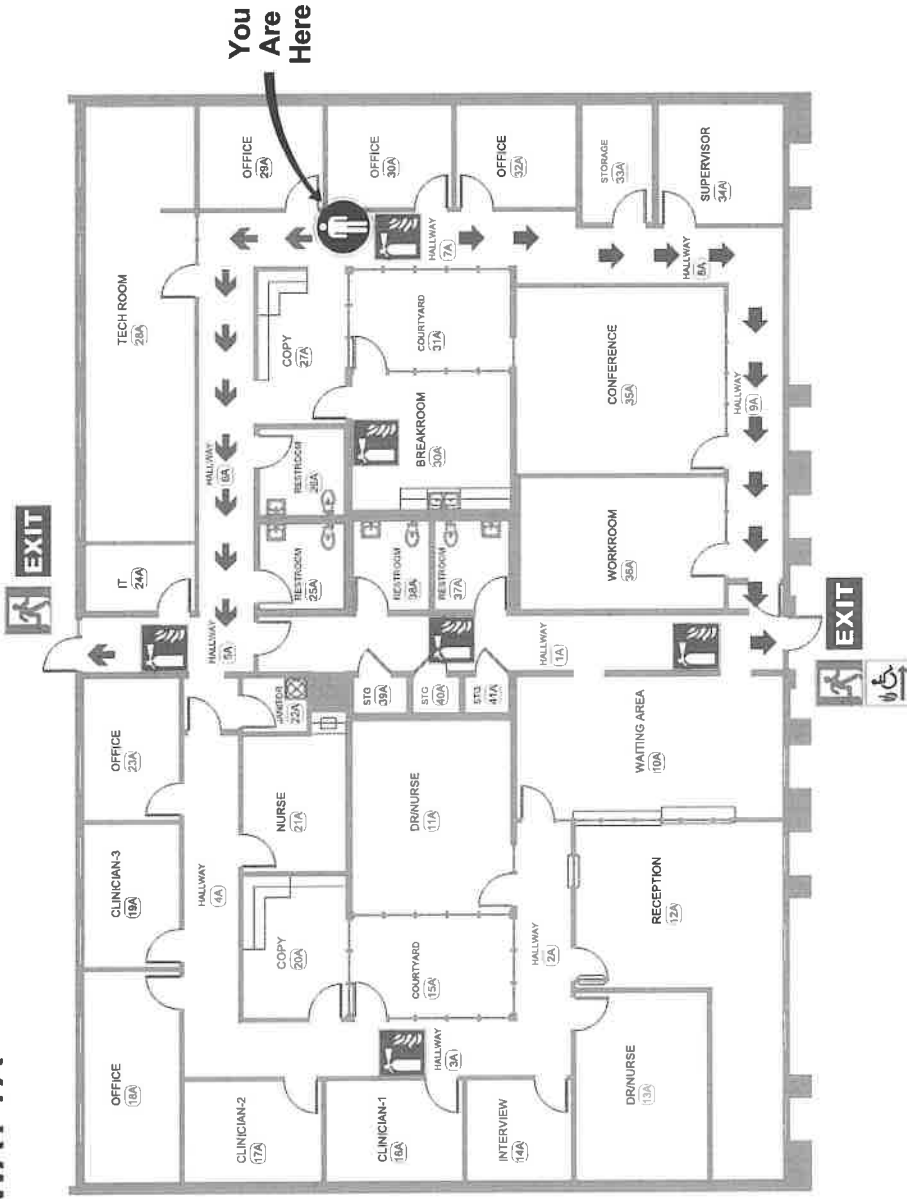
**BEHAVIORAL HEALTH
229 MAIN STREET, BRAWLEY**



REVISED:
JL 02.24.20

EMERGENCY EVACUATION PLAN

HALLWAY 7A



LEGEND

- You Are Here
- Primary Exit Route
- Secondary Exit Route
- Exit
- Emergency Exit
- Emergency Accessible Exit
- Emergency Assembly Area
- Fire Extinguisher
- Room Name & Number

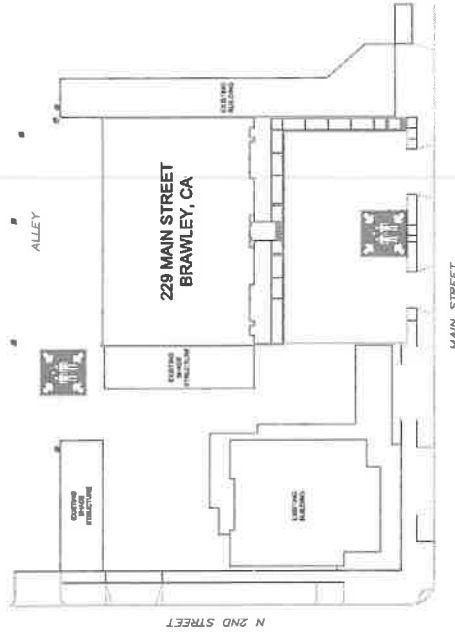
IN CASE OF AN EMERGENCY CALL 911

EVACUATION PROCEDURES

Leave the building by the Emergency Exit

- Proceed directly to your assembly point
- DO NOT stop to collect personal belongings
- DO NOT re-enter the building UNTIL informed it is safe to do so.

EVACUATION ASSEMBLY AREA



ADDRESS

**BEHAVIORAL HEALTH
229 MAIN STREET, BRAWLEY**

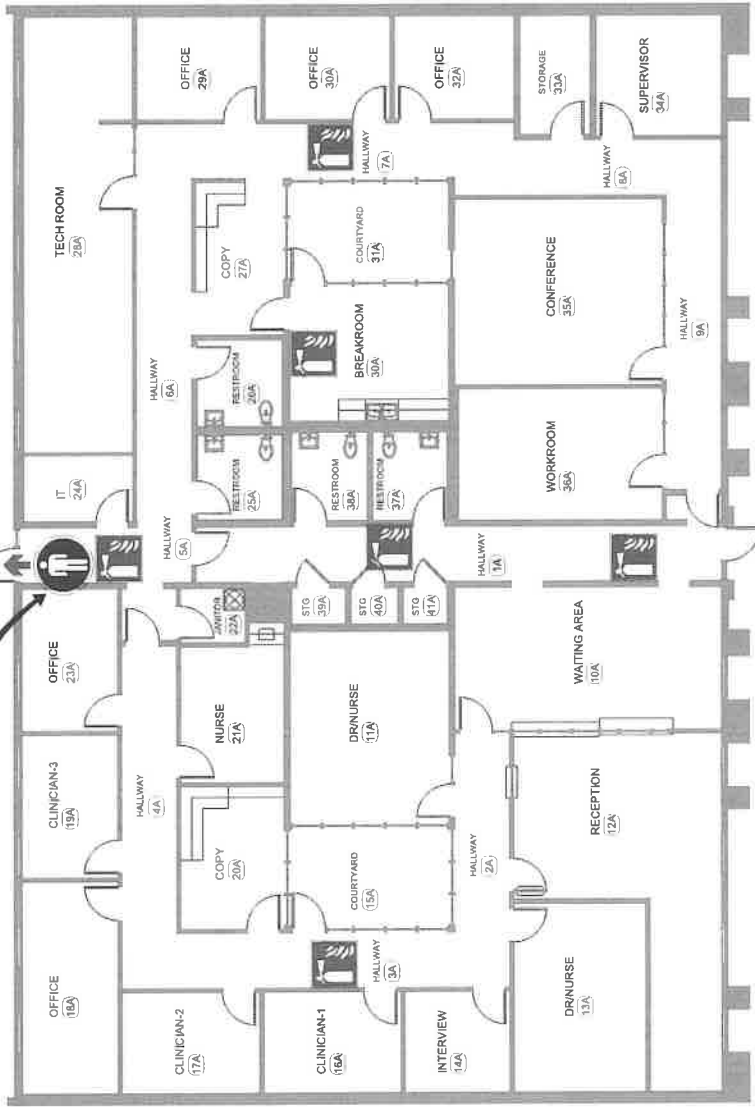


REVISED:
JL 02.24.20

EMERGENCY EVACUATION PLAN

HALLWAY 5A

You
Are
Here



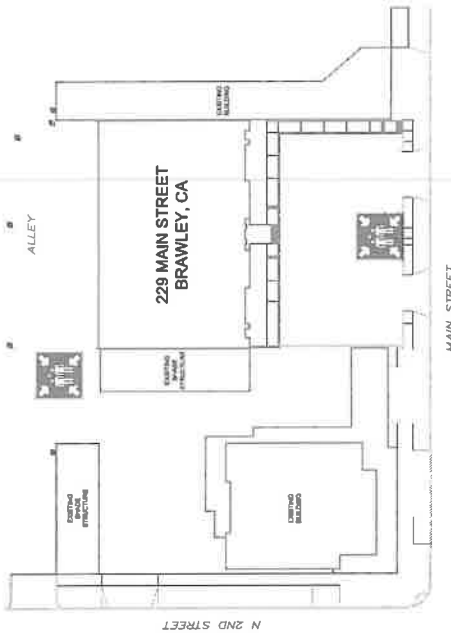
**IN CASE OF AN EMERGENCY CALL
911**

EVACUATION PROCEDURES

Leave the building by the Emergency Exit

- Proceed directly to your assembly point
- DO NOT stop to collect personal belongings
- DO NOT re-enter the building UNTIL informed it is safe to do so.

EVACUATION ASSEMBLY AREA



ADDRESS

**BEHAVIORAL HEALTH
229 MAIN STREET, BRAWLEY**



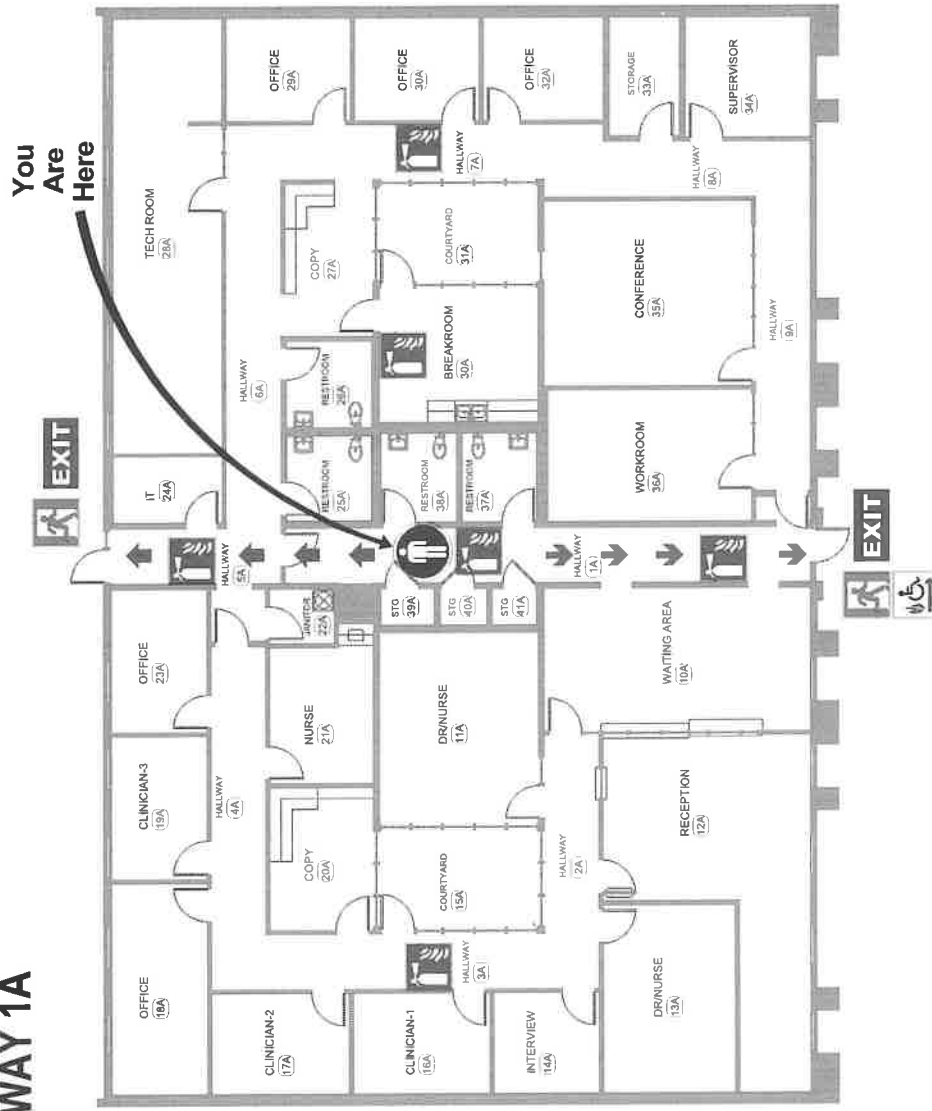
REVISED:
JL 02.24.20

LEGEND

- You Are Here
- Fire Extinguisher
- EXIT Emergency Exit
- Emergency Accessible Exit
- Emergency Assembly Area
- Primary Exit Route
- Secondary Exit Route
- Room Name & Number

EMERGENCY EVACUATION PLAN

HALLWAY 1A

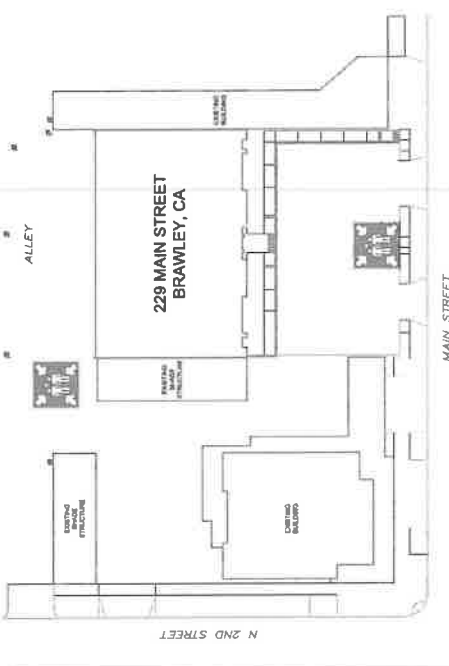


IN CASE OF AN EMERGENCY CALL 911

EVACUATION PROCEDURES

- Leave the building by the Emergency Exit
- Proceed directly to your assembly point
 - DO NOT stop to collect personal belongings
 - DO NOT re-enter the building UNTIL informed it is safe to do so.

EVACUATION ASSEMBLY AREA



ADDRESS

**BEHAVIORAL HEALTH
229 MAIN STREET, BRAWLEY**



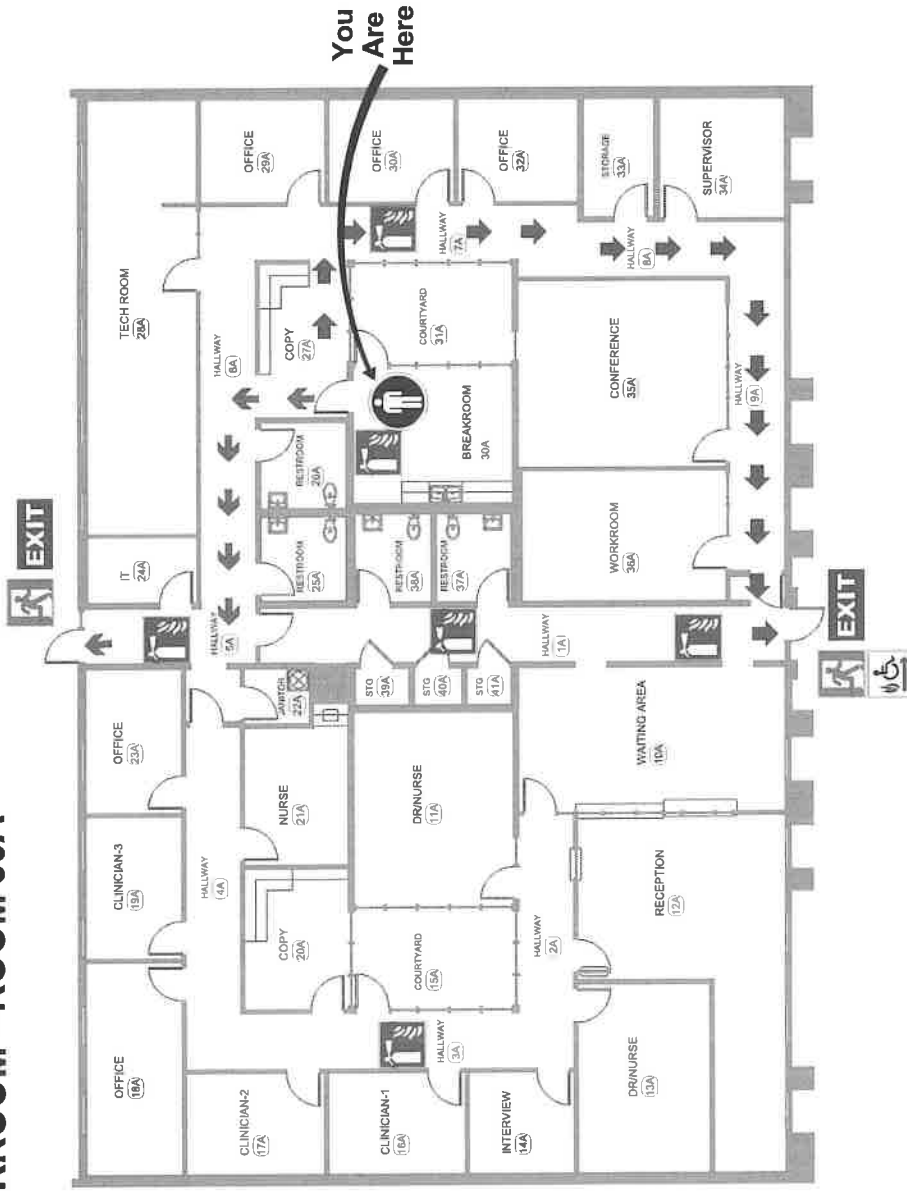
REVISED: JL 02.24.20

LEGEND

- You Are Here
- Primary Exit Route
- Secondary Exit Route
- Fire Extinguisher
- Emergency Exit
- Emergency Accessible Exit
- Emergency Assembly Area
- Room Name & Number

EMERGENCY EVACUATION PLAN

BREAKROOM - ROOM 30A



LEGEND

- You Are Here
- Primary Exit Route
- Secondary Exit Route
- Emergency Exit
- Emergency Accessible Exit
- Emergency Assembly Area
- Fire Extinguisher
- Room Name & Number

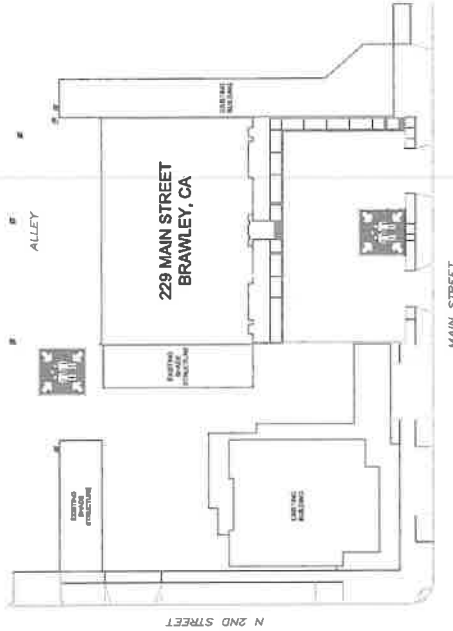
IN CASE OF AN EMERGENCY CALL 911

EVACUATION PROCEDURES

Leave the building by the Emergency Exit

- Proceed directly to your assembly point
- DO NOT stop to collect personal belongings
- DO NOT re-enter the building UNTIL informed it is safe to do so.

EVACUATION ASSEMBLY AREA



ADDRESS

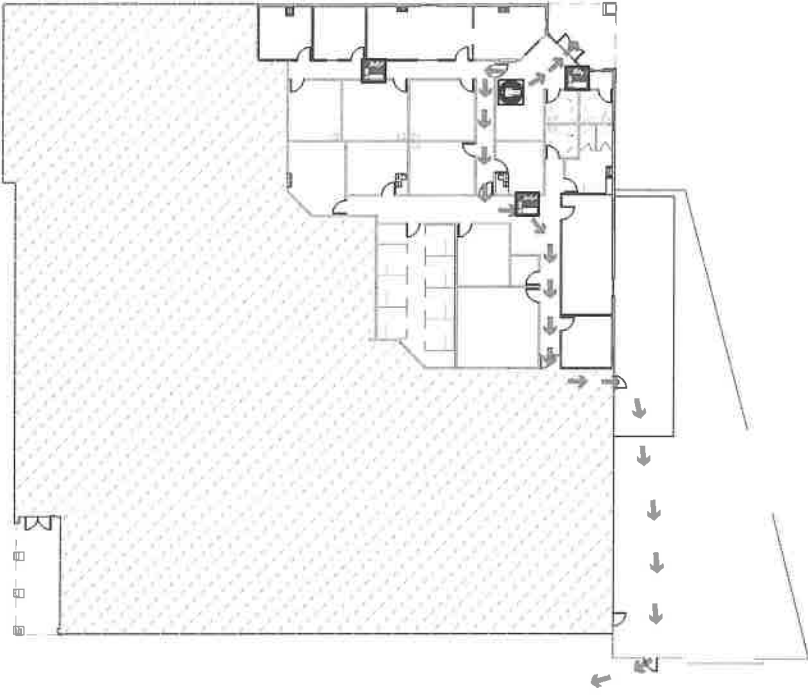
**BEHAVIORAL HEALTH
229 MAIN STREET, BRAWLEY**



REVISED:
JL 02.24.20



EVACUATION PLAN



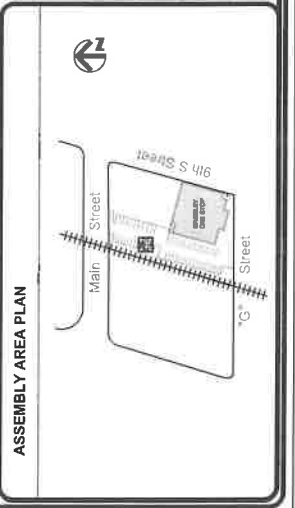
BEHAVIORAL HEALTH DEPARTMENT

BEHAVIORAL HEALTH DEPARTMENT
 195 S 9TH STREET
 BRAWLEY, CA 92227

REVISIONS
01-04-16 *JG
10-12-16 *JG

- EVACUATION PROCEDURES**
- Proceed directly to your assembly point
 - DO NOT stop to collect personal belongings
 - DO NOT use elevators or lifts
 - DO NOT re-enter the building until informed it is safe to do so.
 - CALL the emergency number 911

SYMBOLS KEY	
	You are here
	Primary Exit Route
	Secondary Exit Route
	Fire Extinguisher
	Fire alarm call point
	Fire Hose
	Fire Alarm Annunciator Panel
	Evacuation Assembly Point

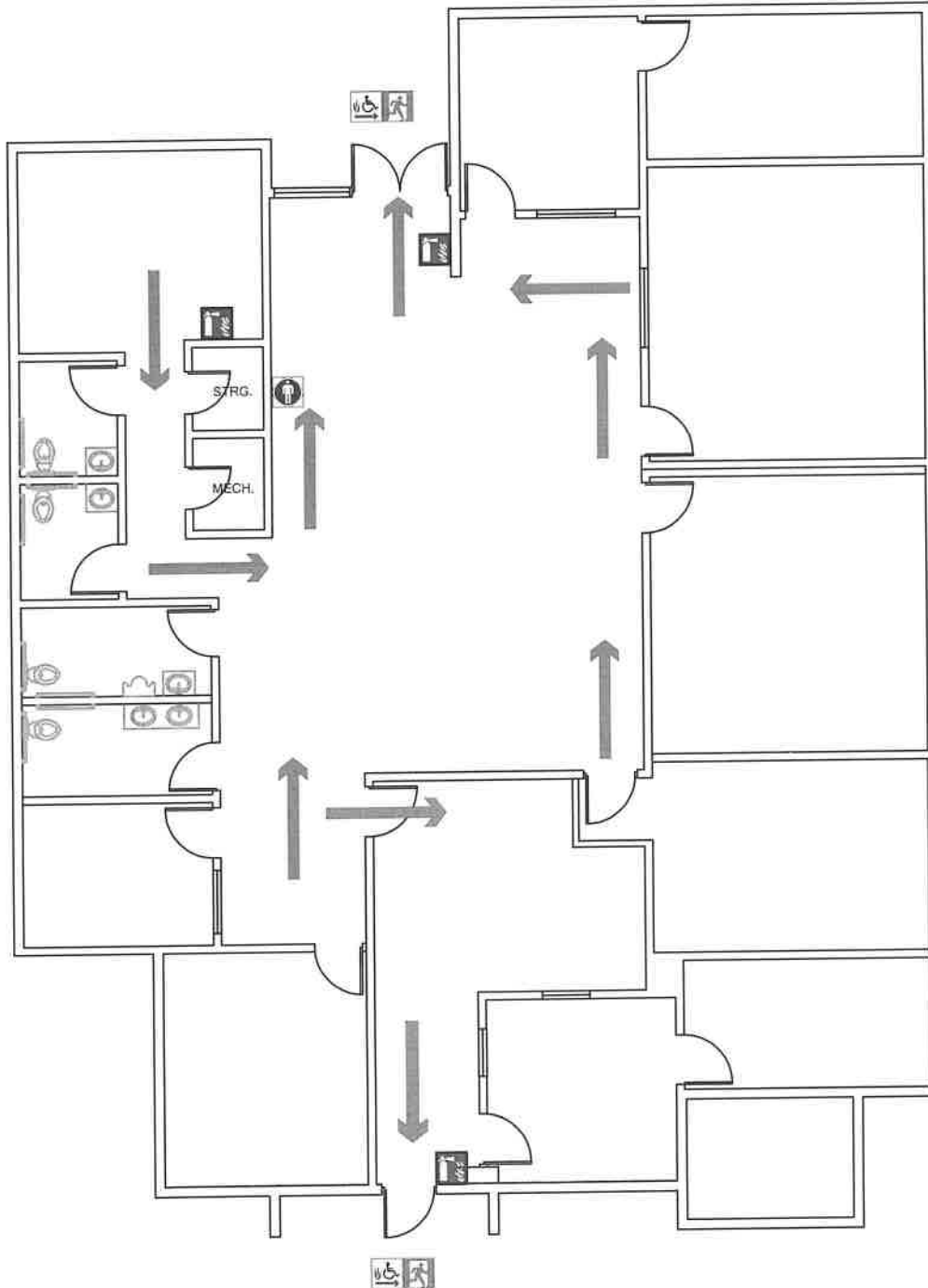


EVACUATION PLAN

**BEHAVIORAL HEALTH
205 MAIN STREET
BRAWLEY, CA 92227**



N.T.S. REVISIONS:
2.13.14/Brenda Espinoza



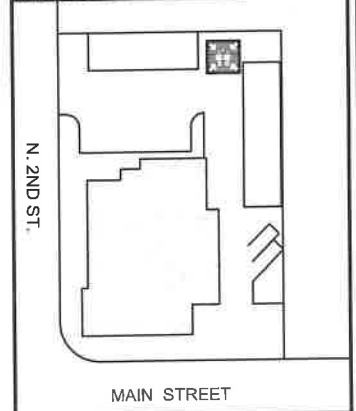
EVACUATION PROCEDURES

- Proceed directly to your assembly point
- DO NOT stop to collect personal belongings
- DO NOT use elevators or lifts
- DO NOT re-enter the building until informed it is safe to do so.
- CALL the emergency number 911

SYMBOLS KEY

- You are here
- Primary exit route
- Secondary exit route
- Emergency exit
- Exit with wheelchair access
- Fire extinguisher
- Evacuation assembly point

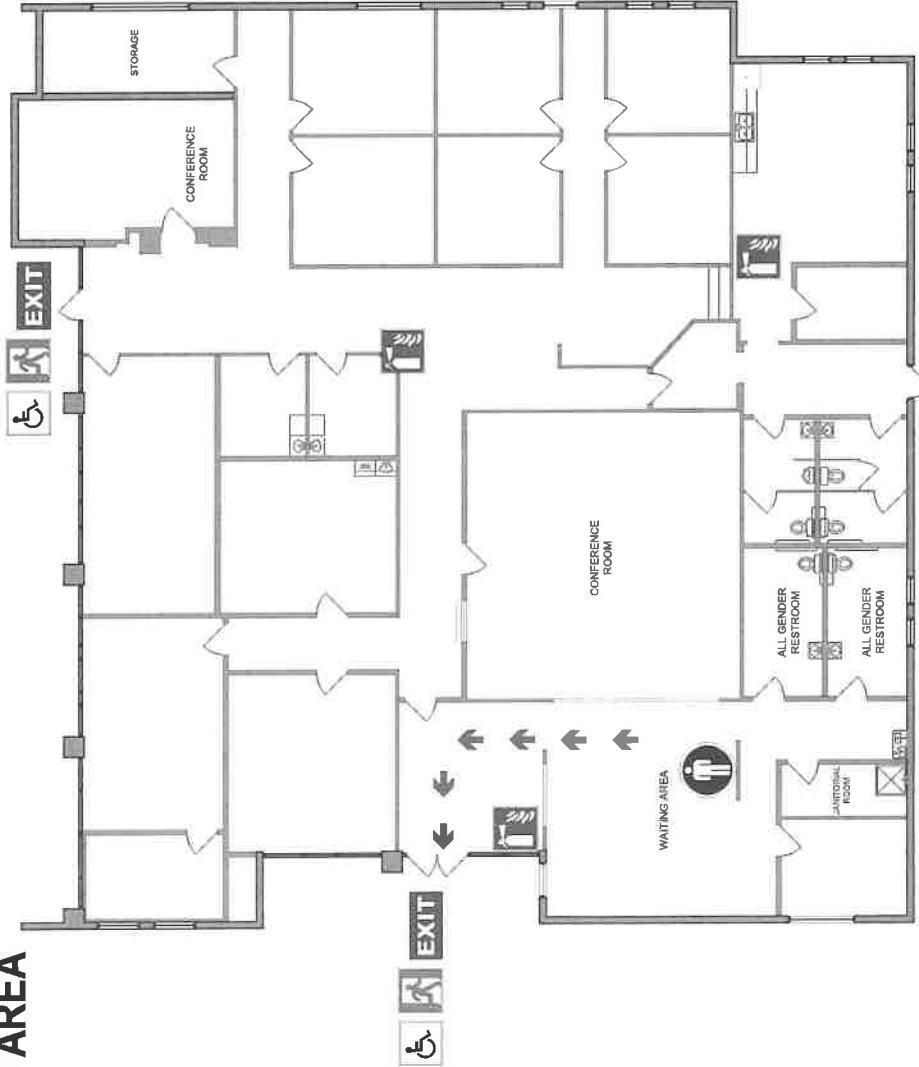
ASSEMBLY AREA PLAN



FIRST FLOOR

EMERGENCY EVACUATION PLAN

WAITING AREA



LEGEND

- You Are Here
- Primary Exit Route
- Secondary Exit Route
- EXIT Emergency Exit
- Emergency Accessible Exit
- Fire Extinguisher
- Room Name & Number
- Emergency Assembly Area

IN CASE OF AN EMERGENCY CALL

911

EVACUATION PROCEDURES

Leave the building by the Emergency Exit

- Proceed directly to your assembly point
- DO NOT stop to collect personal belongings
- DO NOT re-enter the building UNTIL informed it is safe to do so.

EVACUATION ASSEMBLY AREA



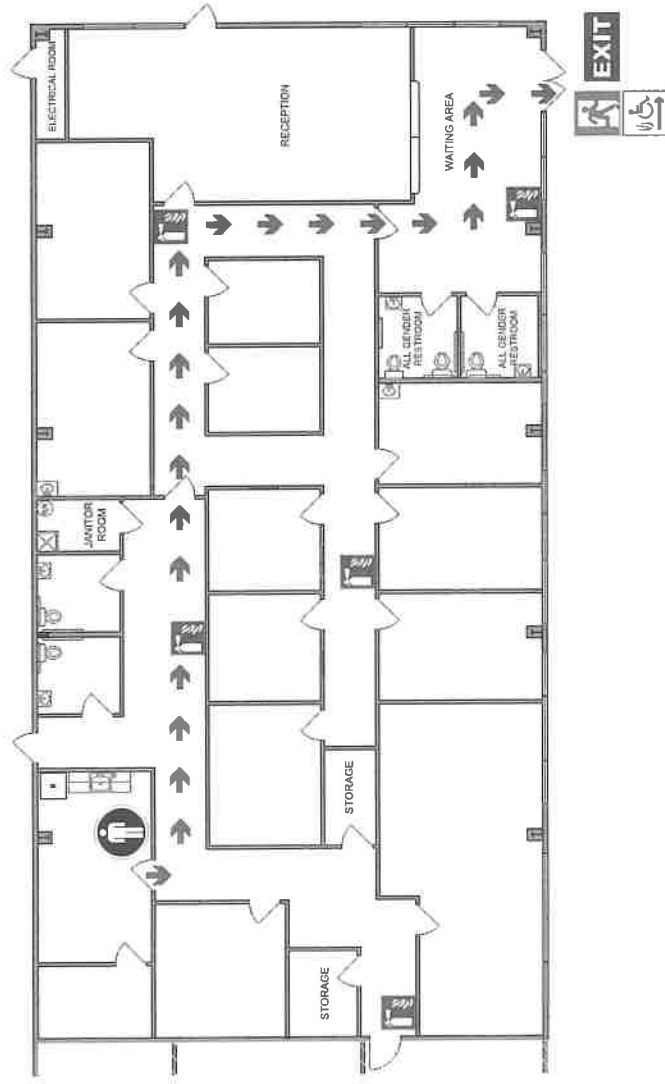
ADDRESS

**ANXIETY AND DEPRESSION
CLINIC AND FSP PROGRAM
1501 NORTH IMPERIAL
AVENUE CALEXICO, CA**



EMERGENCY EVACUATION PLAN

BREAK ROOM



LEGEND

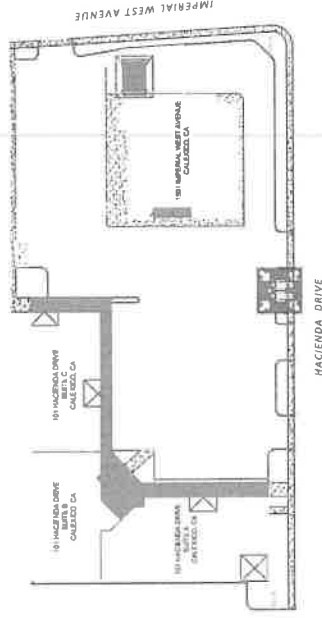
- You Are Here
- Primary Exit Route
- Secondary Exit Route
- Emergency Exit
- Emergency Accessible Exit
- Emergency Assembly Area
- Fire Extinguisher
- Room Name & Number

IN CASE OF AN EMERGENCY CALL 911

EVACUATION PROCEDURES

- Leave the building by the Emergency Exit
- Proceed directly to your assembly point
 - DO NOT stop to collect personal belongings
 - DO NOT re-enter the building UNTIL informed it is safe to do so.

EVACUATION ASSEMBLY AREA



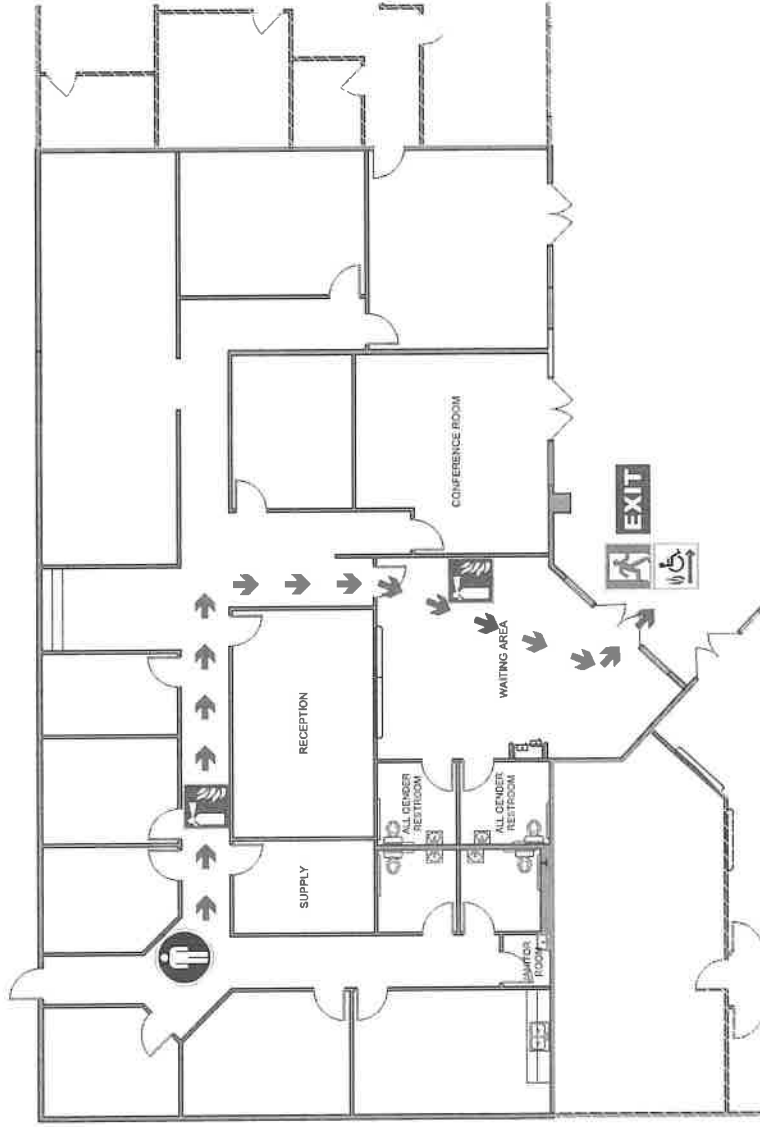
ADDRESS

**BEHAVIORAL HEALTH
CHILDREN'S OUTPATIENT CLINIC
101 HACIENDA DRIVE, SUITE C
CALEXICO, CA**



EMERGENCY EVACUATION PLAN

HALLWAY



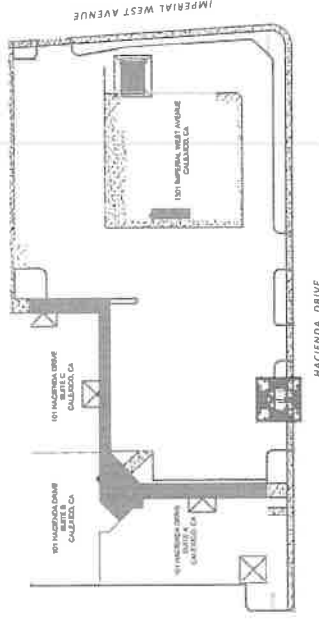
**IN CASE OF AN EMERGENCY CALL
911**

EVACUATION PROCEDURES

Leave the building by the Emergency Exit

- Proceed directly to your assembly point
- DO NOT stop to collect personal belongings
- DO NOT re-enter the building UNTIL informed it is safe to do so.

EVACUATION ASSEMBLY AREA



ADDRESS

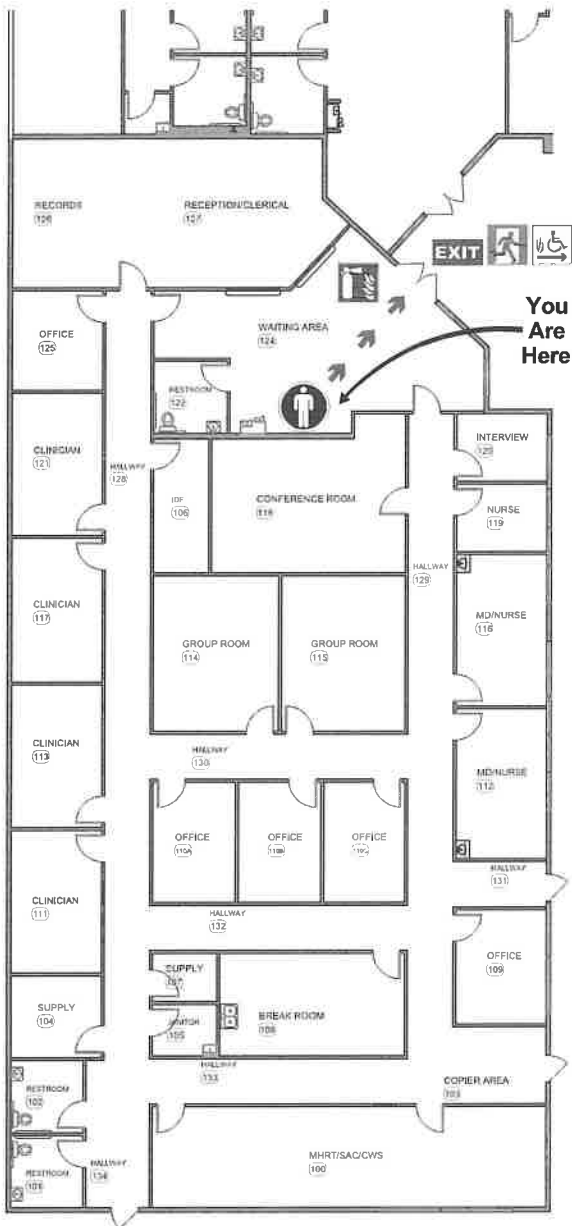
**BEHAVIORAL HEALTH
ADOLESCENT SUBSTANCE USE
DISORDER PROGRAM
101 HACIENDA DRIVE, SUITE B, CALEXICO**

LEGEND

- You Are Here
- Primary Exit Route
- Secondary Exit Route
- Fire Extinguisher
- Emergency Exit
- Emergency Accessible Exit
- Emergency Assembly Area
- Room Name & Number

EMERGENCY EVACUATION PLAN

WAITING AREA - ROOM 124



IN CASE OF AN EMERGENCY CALL 911

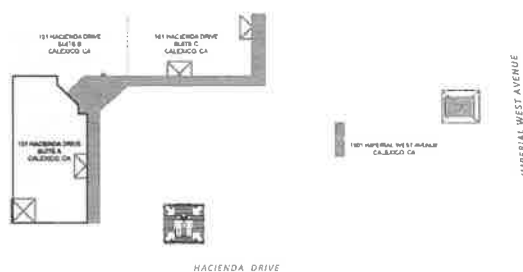
EVACUATION PROCEDURES

- Leave the building by the Emergency Exit
- Proceed directly to your assembly point
 - DO NOT stop to collect personal belongings
 - DO NOT re-enter the building UNTIL informed it is safe to do so.

LEGEND

- You Are Here
- Primary Exit Route
- Secondary Exit Route
- EXIT Emergency Exit
- Emergency Accessible Exit
- Emergency Assembly Area
- Fire Extinguisher
- 00000
124 Room Name & Number

EVACUATION ASSEMBLY AREA



ADDRESS

**BEHAVIORAL HEALTH
YOUTH AND YOUNG ADULTS**



**101 HACIENDA DRIVE, SUITE A
CALEXICO, CA**

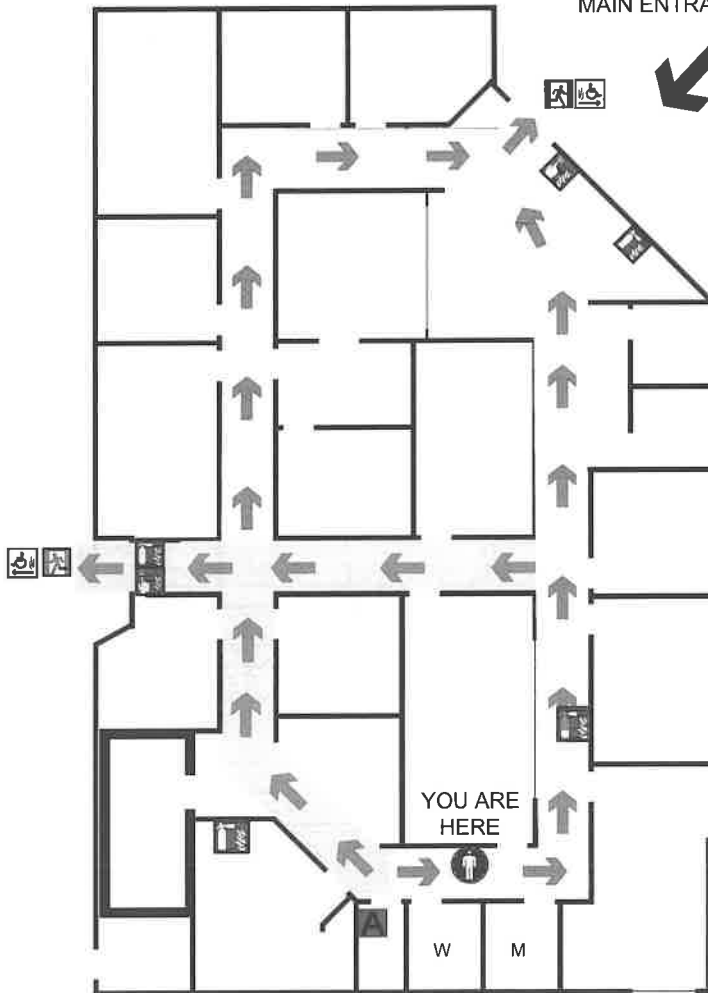
EMERGENCY EVACUATION PLAN



BEHAVIORAL HEALTH
 ANXIETY AND DEPRESSION
 25 E. 3RD STREET
 Calexico, CA 92231



MAIN ENTRANCE



BEHAVIORAL HEALTH
 ANXIETY AND DEPRESSION
 25 E. 3RD STREET
 Calexico, CA 92231

REVISIONS

03-08-17 DB

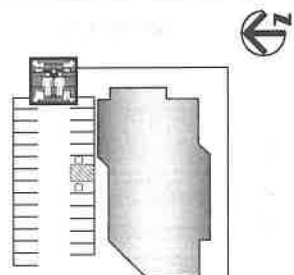
EVACUATION PROCEDURES

- Proceed directly to your assembly point
- DO NOT stop to collect personal belongings
- DO NOT re-enter the building until informed it is safe to do so,
- IN CASE OF EMERGENCY CALL 911

SYMBOLS KEY

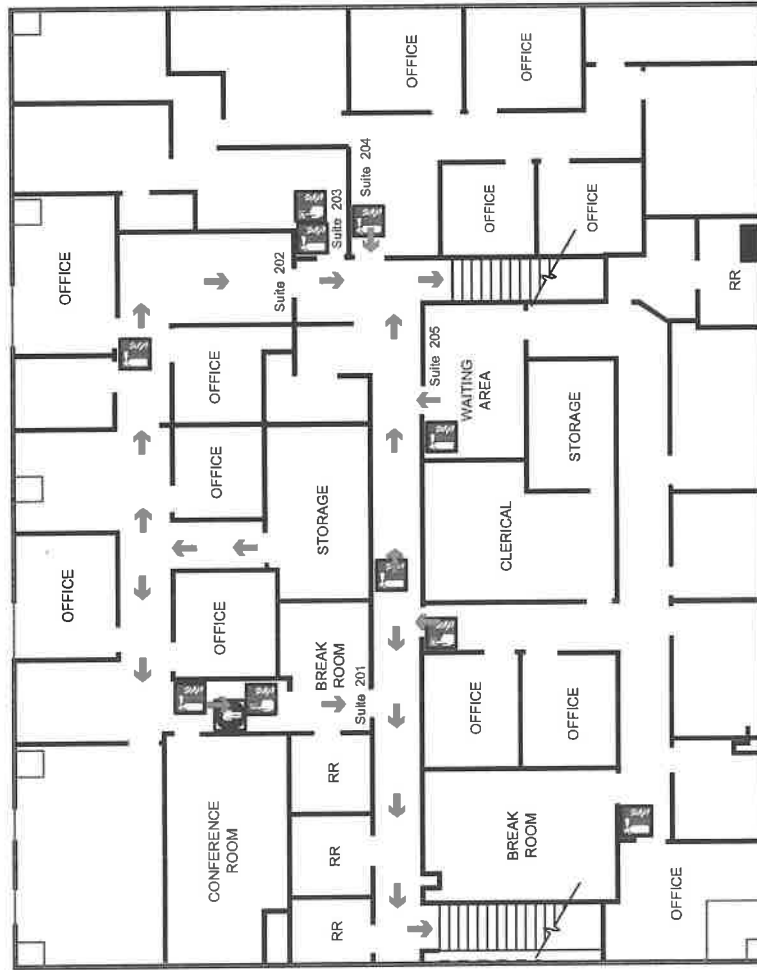
	You are here
	Primary Exit Route
	Secondary Exit Route
	Emergency Exit
	Evacuation Assembly Point
	Fire Extinguisher
	Fire Alarm Pull Station
	Fire Alarm Annunciator Panel
	Exit with wheelchair access

ASSEMBLY AREA PLAN



FIRE EVACUATION PLAN

MENTAL HEALTH - MENVILLE PLAZA
SECOND FLOOR

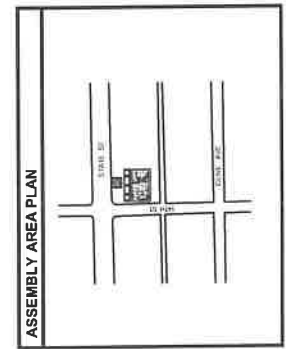


BUILDING NAME AND ADDRESS
 MENTAL HEALTH
 MENVILLE PLAZA
 1295 STATE ST
 EL CENTRO, CA 92243

08/27/12 JG
 N.T.S.

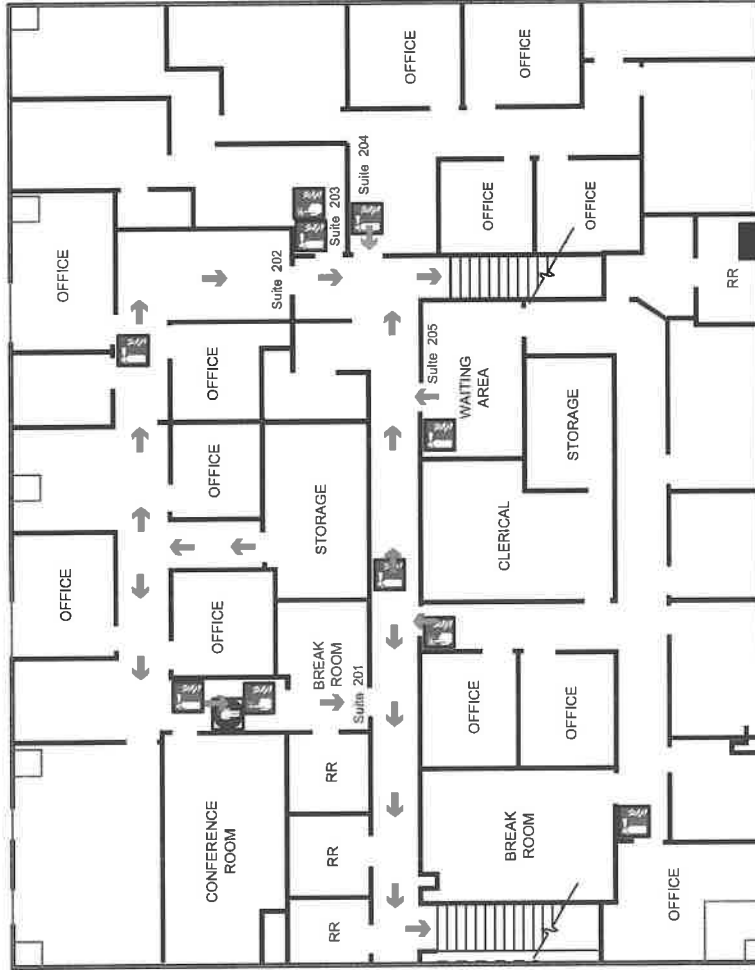
SYMBOLS KEY		FIRE ALARM CALL POINT		FIRE ALARM ANNUNCIATOR PANEL	
	You are here		Fire alarm call point		Fire Alarm Annunciator Panel
	Primary exit route		Fire extinguisher		Elevator or lift
	Secondary exit route		Fire Hose		Stairs
	Evacuation exit route		Exit with wheelchair access		
	Emergency exit		Evacuation assembly point		

- EVACUATION PROCEDURES**
- ★ Proceed directly to your assembly point
 - ★ DO NOT stop to collect personal belongings
 - ★ DO NOT use elevators or lifts
 - ★ DO NOT re-enter the building until informed it is safe to do so.



FIRE EVACUATION PLAN

MENTAL HEALTH - MENVIELLE PLAZA
SECOND FLOOR



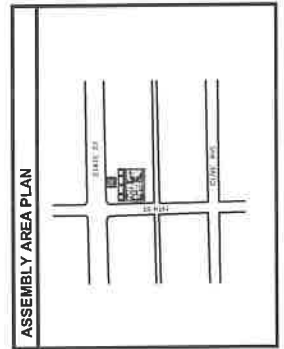
BUILDING NAME AND ADDRESS
 MENTAL HEALTH
 MENVIELLE PLAZA
 1295 STATE ST
 EL CENTRO, CA 92243



IMPERIAL COUNTY SHERIFF'S OFFICE
 00771130
 N.T.S.

SYMBOLS KEY		FIRE ALARM CALL POINT		FIRE ALARM ANNUNCIATOR PANEL	
	You are here		Fire alarm call point		Fire Alarm Annunciator Panel
	Primary exit route		Fire extinguisher		Elevator or lift
	Secondary exit route		Fire Hose		Stairs
	Evacuation exit route		Exit with wheelchair access		
	Emergency exit		Evacuation assembly point		

- EVACUATION PROCEDURES**
- Proceed directly to your assembly point
 - DO NOT stop to collect personal belongings
 - DO NOT use elevators or lifts
 - DO NOT re-enter the building until informed it is safe to do so.



FIRE EVACUATION PLAN

BEHAVIORAL HEALTH CLINIC FLOOR PLAN



BUILDING NAME AND ADDRESS
BEHAVIORAL HEALTH CLINIC
 120 N 8TH STREET
 EL CENTRO, CA 92243

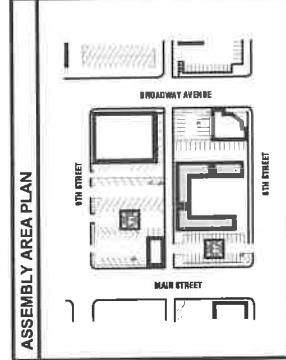
REVISIONS
 04.01.11 JG

N.T.S.

SYMBOLS KEY

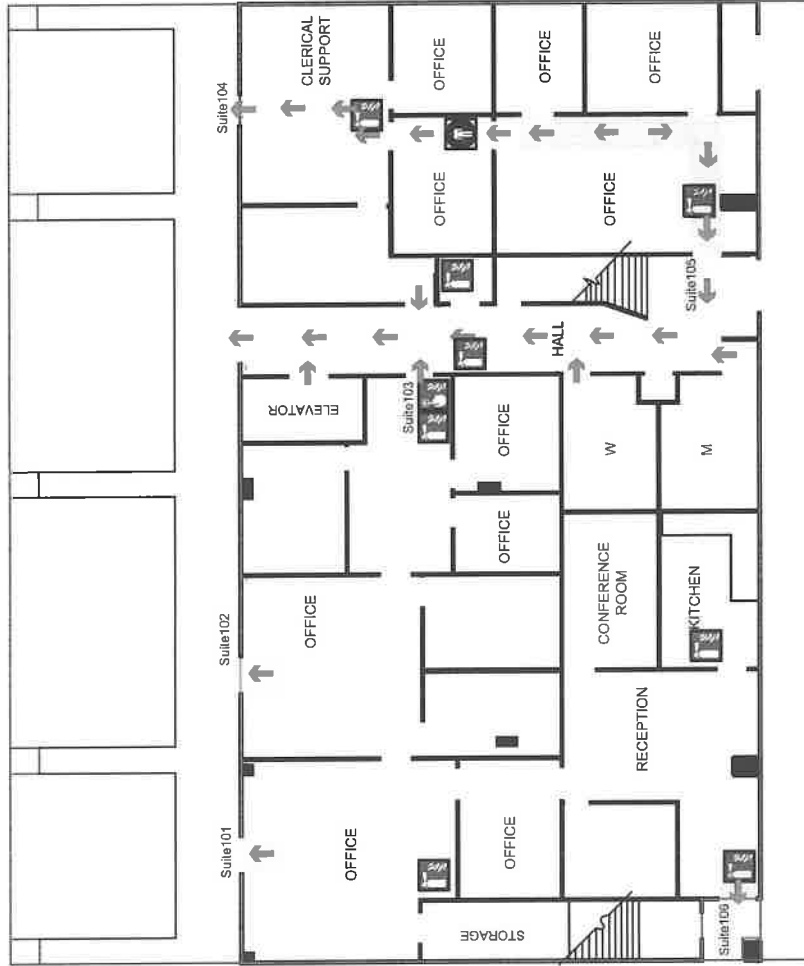
Symbol	Description	Fire Alarm Call Point	Fire Alarm Annunciator Panel
	You are here		
	Primary exit route		<input checked="" type="checkbox"/> Elevator or lift
	Secondary exit route		
	Evacuation exit route		
	Emergency exit		

- EVACUATION PROCEDURES**
- Proceed directly to your assembly point
 - DO NOT stop to collect personal belongings
 - DO NOT use elevators or lifts
 - DO NOT re-enter the building until informed it is safe to do so.



FIRE EVACUATION PLAN

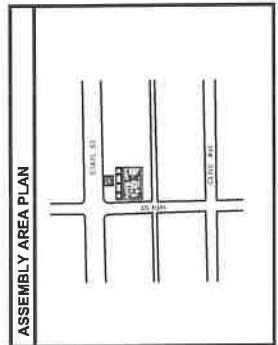
MENTAL HEALTH - MENVILLE PLAZA
FIRST FLOOR



BUILDING NAME AND ADDRESS	
MENTAL HEALTH MENVILLE PLAZA 1295 STATE ST EL CENTRO, CA 92243	
	INVOICED 10.28.11 JG
HERRING COUNTY CALIFORNIA	
N.T.S.	

SYMBOLS KEY	
	You are here
	Primary exit route
	Secondary exit route
	Evacuation exit route
	Emergency exit
	Fire alarm call point
	Fire extinguisher
	Fire Hose
	Exit with wheelchair access
	Evacuation assembly point
	Fire Alarm Annunciator Panel
	Elevator or lift
	Stairs

- EVACUATION PROCEDURES**
- Proceed directly to your assembly point
 - DO NOT stop to collect personal belongings
 - DO NOT use elevators or lifts
 - DO NOT re-enter the building until informed it is safe to do so.

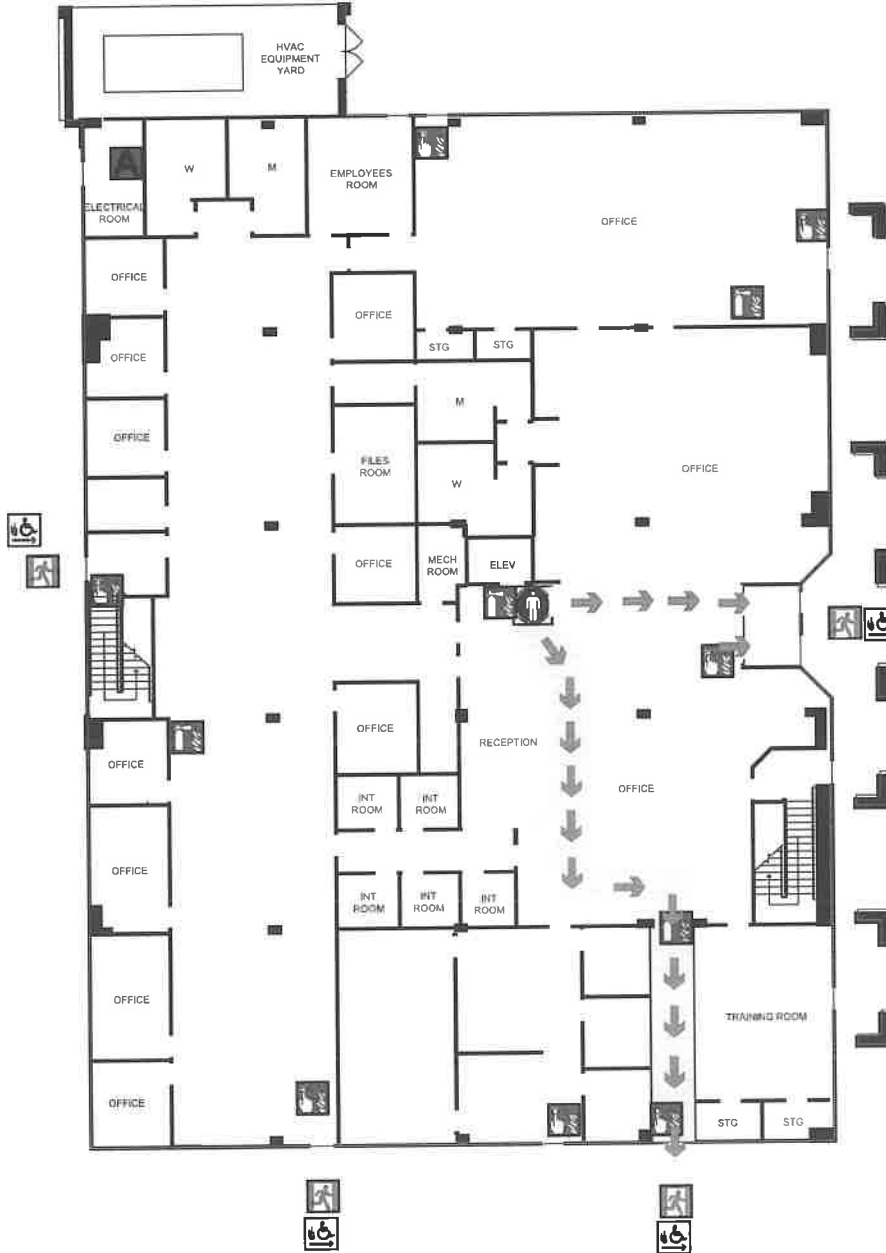


EVACUATION PLAN



FIRST FLOOR

**BEHAVIORAL HEALTH
FIRST FLOOR
BUILDING "D"**
2695 S. 4TH STREET
EL CENTRO, CA 92243



REVISIONS

07-01-14 JG
05-11-16 JG

EVACUATION PROCEDURES

- Proceed directly to your assembly point
- DO NOT stop to collect personal belongings
- DO NOT use elevators or lifts
- DO NOT re-enter the building until informed it is safe to do so.
- CALL the emergency number 911

SYMBOLS KEY

	You are here
	Primary Exit Route
	Secondary Exit Route
	Emergency Exit
	Evacuation Assembly Point
	Fire Extinguisher
	Fire Hose
	Fire alarm call point
	Fire Alarm Annunciator Panel

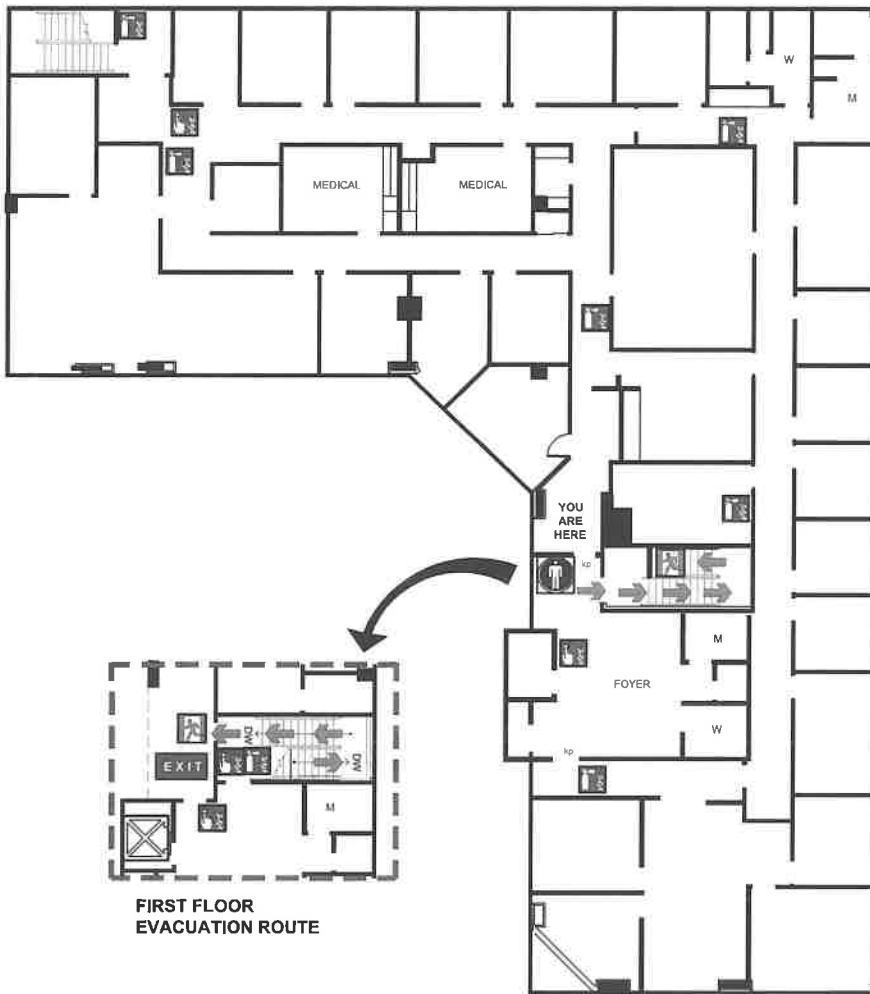
ASSEMBLY AREA PLAN



EVACUATION PLAN



**BEHAVIORAL HEALTH DEPARTMENT
202 N 8th STREET
EL CENTRO, CA
THIRD FLOOR**



**FIRST FLOOR
EVACUATION ROUTE**

DEPARTMENT

**BEHAVIORAL HEALTH
DEPARTMENT
LOCATION- FOYER AREA**

REVISIONS

07.07.11 JG 09.29.16 JG 01.23.18 JG
08.29.11 JG 02.08.17 JG

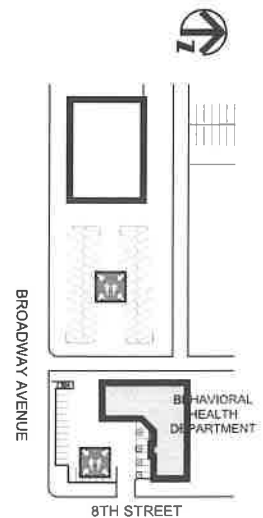
EVACUATION PROCEDURES

- Proceed directly to your assembly point
- DO NOT stop to collect personal belongings
- DO NOT use elevators or lifts in case of fire
- DO NOT re-enter the building until informed it is safe to do so.
- IN CASE OF EMERGENCY CALL 911

SYMBOLS KEY

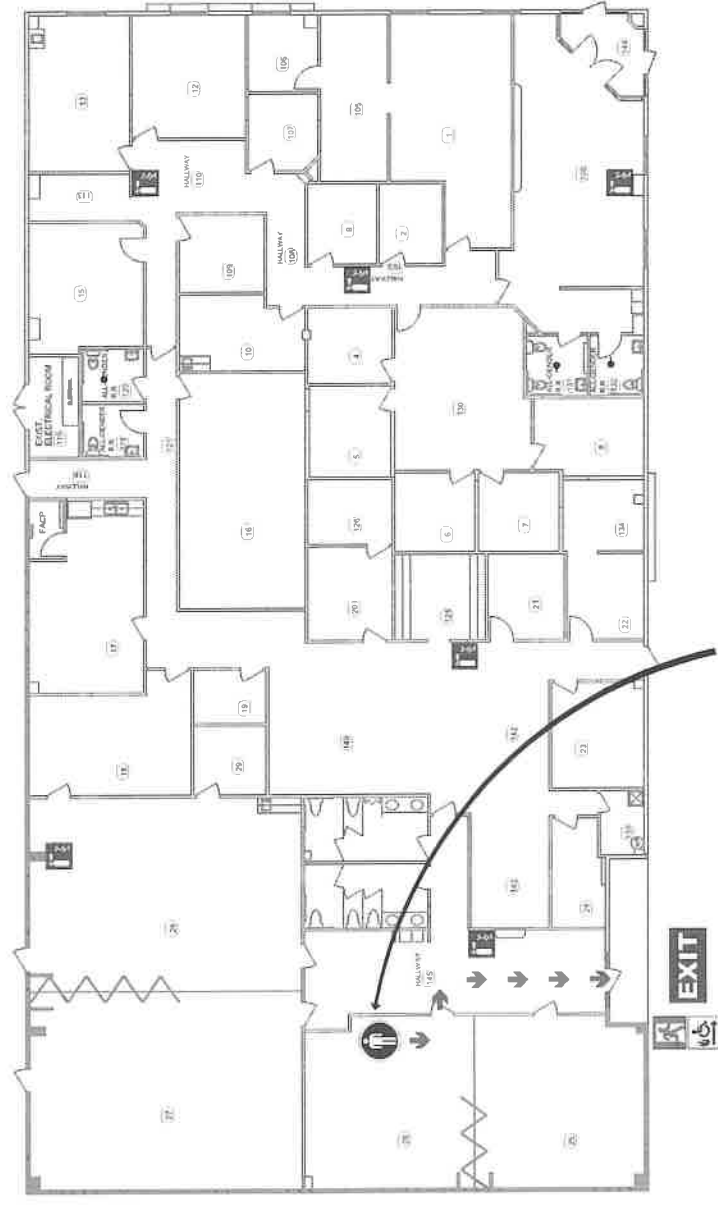
	You Are Here
	Primary Exit Route
	Secondary Exit Route
	Emergency Exit
	Evacuation Assembly Point
	Fire Extinguisher
	Fire Alarm Pull Station
	Elevator or Lift
	Stairs

ASSEMBLY AREA PLAN



EMERGENCY EVACUATION PLAN

TRAINING AREA 2



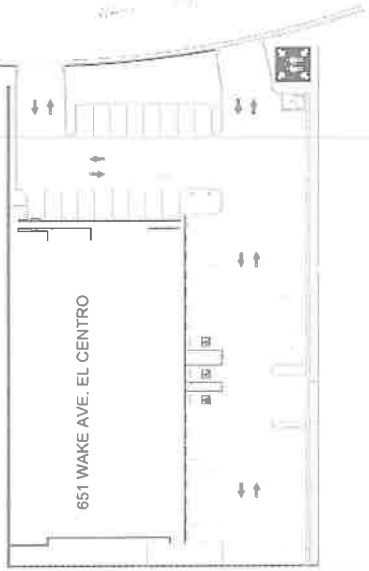
You Are Here

IN CASE OF AN EMERGENCY CALL 911

EVACUATION PROCEDURES

- Leave the building by the Emergency Exit
- Proceed directly to your assembly point
 - DO NOT stop to collect personal belongings
 - DO NOT re-enter the building UNTIL informed it is safe to do so.

EVACUATION ASSEMBLY AREA



ADDRESS

**BEHAVIORAL HEALTH
CENTER FOR CLINICAL TRAINING
651 WAKE AVE, EL CENTRO, CA**



LEGEND

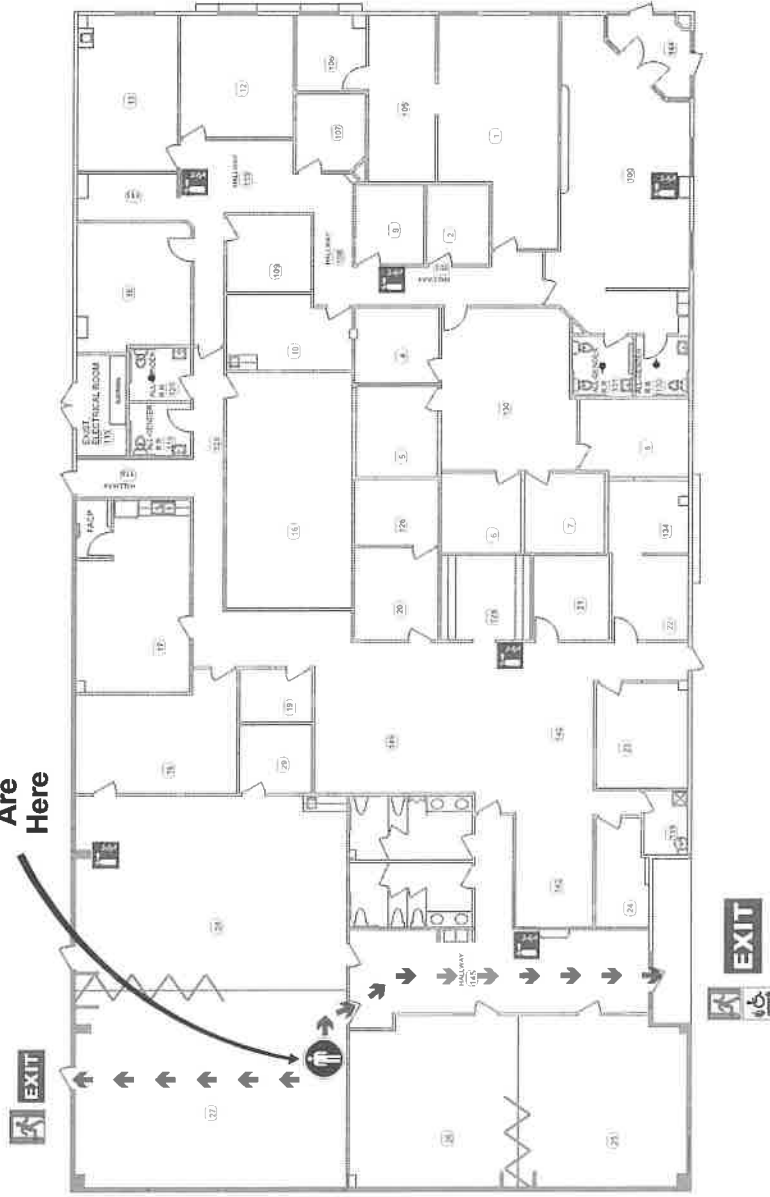
- You Are Here
- Primary Exit Route
- Secondary Exit Route
- Emergency Exit
- Emergency Accessible Exit
- Emergency Assembly Area
- Fire Extinguisher
- Room Name & Number

REVISED: J. 03.09.20

EMERGENCY EVACUATION PLAN

TRAINING AREA 3

You Are Here



LEGEND

- You Are Here
- Primary Exit Route
- Secondary Exit Route
- Emergency Exit
- Emergency Accessible Exit
- Emergency Assembly Area
- Fire Extinguisher
- Room Name & Number

IN CASE OF AN EMERGENCY CALL

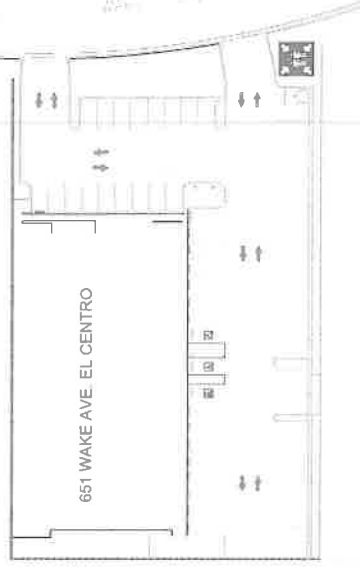
911

EVACUATION PROCEDURES

Leave the building by the Emergency Exit

- Proceed directly to your assembly point
- DO NOT stop to collect personal belongings
- DO NOT re-enter the building UNTIL informed it is safe to do so.

EVACUATION ASSEMBLY AREA



ADDRESS

**BEHAVIORAL HEALTH
CENTER FOR CLINICAL TRAINING
651 WAKE AVE, EL CENTRO, CA**



REVISED:
JL 03/09/20

EMERGENCY EVACUATION PLAN

COMM SERVICE

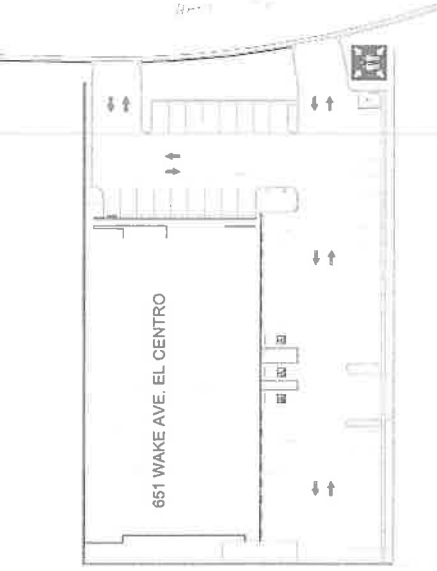
IN CASE OF AN EMERGENCY CALL

911

EVACUATION PROCEDURES

- Leave the building by the Emergency Exit
- Proceed directly to your assembly point
 - DO NOT stop to collect personal belongings
 - DO NOT re-enter the building UNTIL informed it is safe to do so.

EVACUATION ASSEMBLY AREA

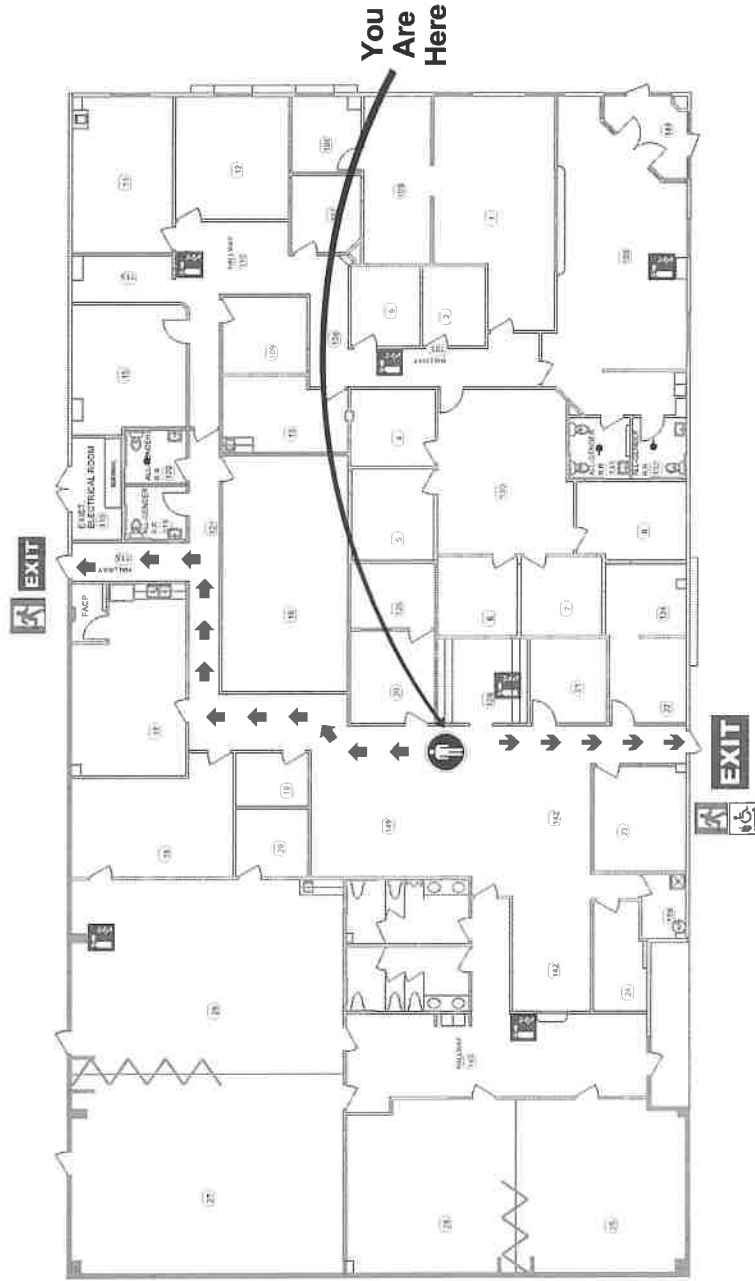


ADDRESS

**BEHAVIORAL HEALTH
CENTER FOR CLINICAL TRAINING
651 WAKE AVE, EL CENTRO, CA**



REVISED:
JULY 2020



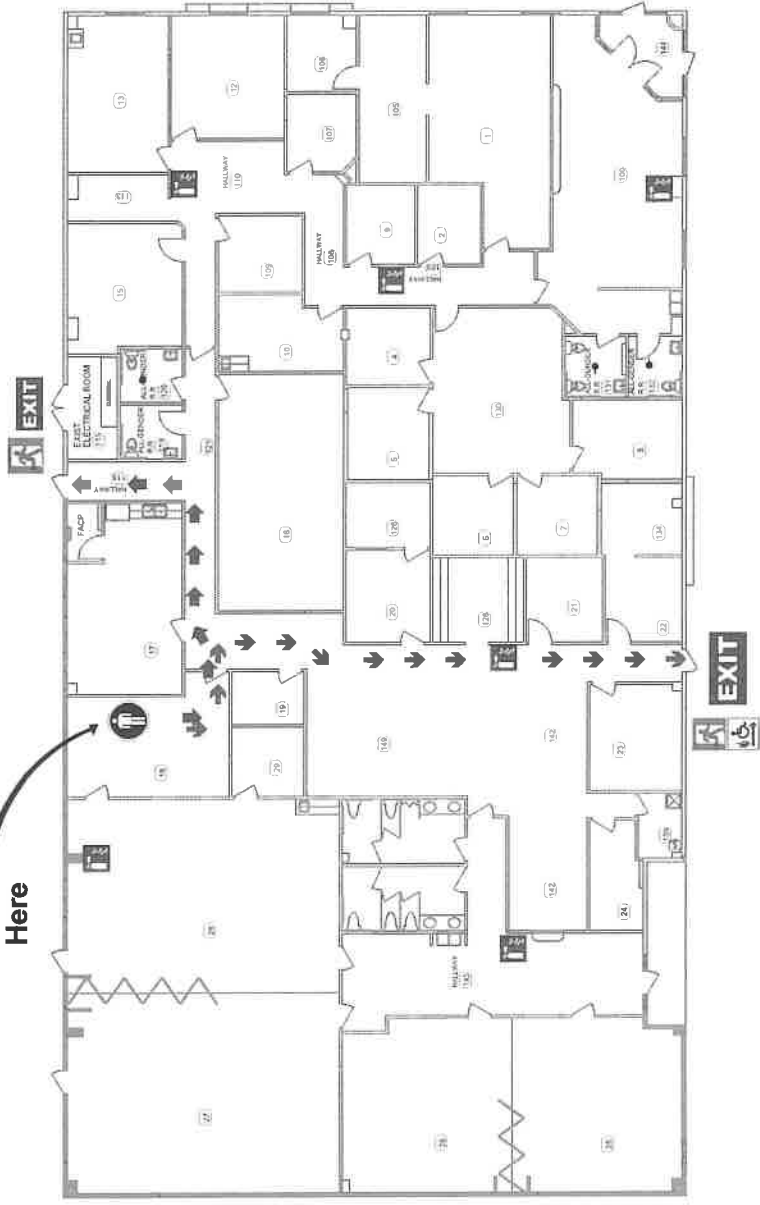
LEGEND

- You Are Here
- Primary Exit Route
- Secondary Exit Route
- Emergency Exit
- Emergency Accessible Exit
- Emergency Assembly Area
- Fire Extinguisher
- Room Name & Number

EMERGENCY EVACUATION PLAN

CONFERENCE

You Are Here



IN CASE OF AN EMERGENCY CALL

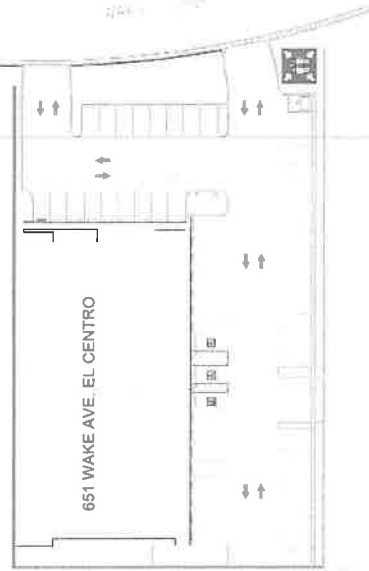
911

EVACUATION PROCEDURES

Leave the building by the Emergency Exit

- Proceed directly to your assembly point
- DO NOT stop to collect personal belongings
- DO NOT re-enter the building UNTIL informed it is safe to do so.

EVACUATION ASSEMBLY AREA



ADDRESS

**BEHAVIORAL HEALTH
CENTER FOR CLINICAL TRAINING
651 WAKE AVE, EL CENTRO, CA**



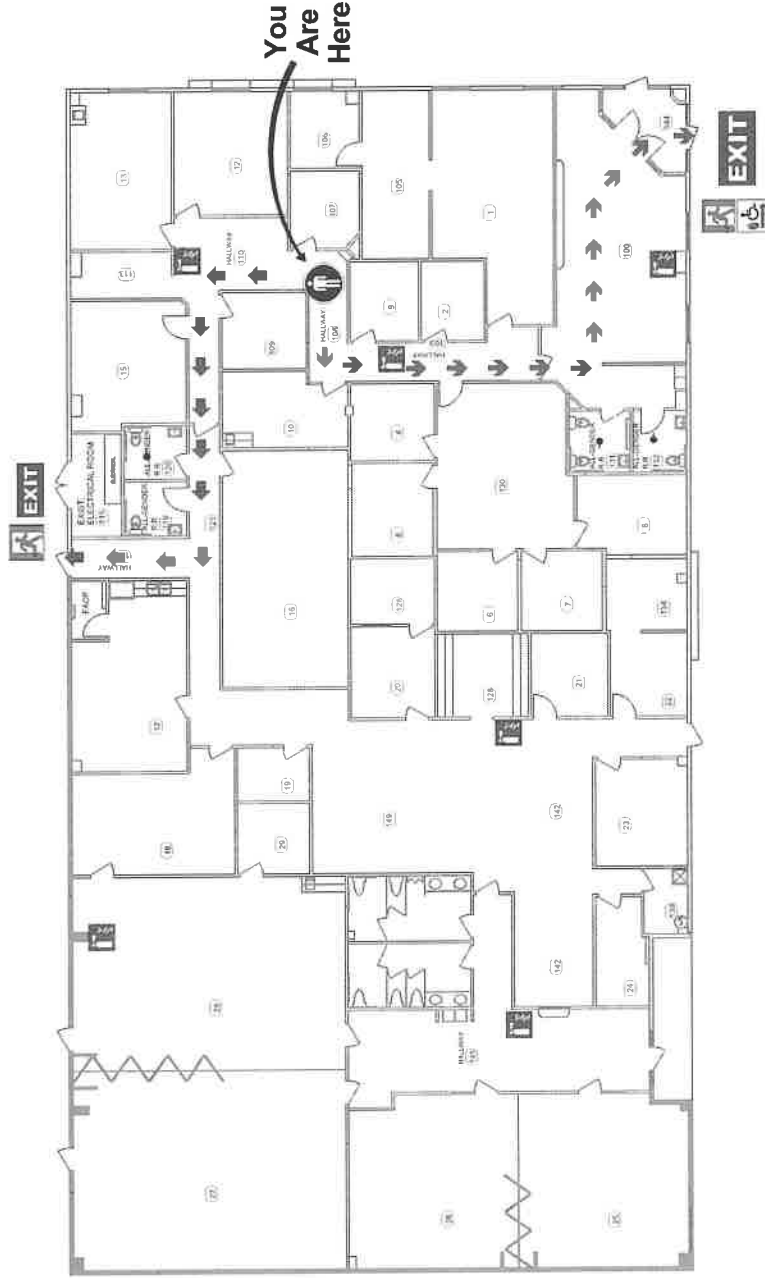
REVISED:
JL 06/06/20

LEGEND

- You Are Here
- Primary Exit Route
- Secondary Exit Route
- Fire Extinguisher
- Emergency Exit
- Emergency Accessible Exit
- Emergency Assembly Area
- Room Name & Number

EMERGENCY EVACUATION PLAN

HALLWAY 108



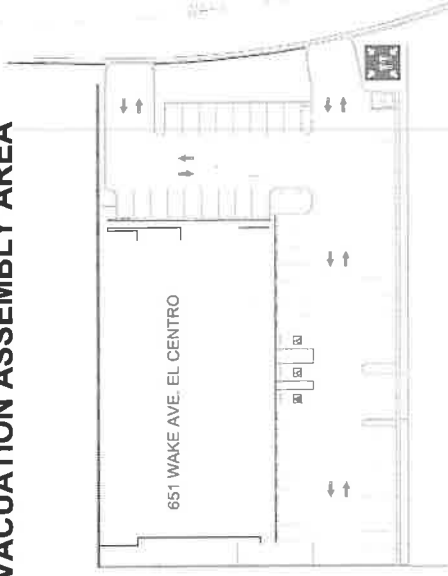
**IN CASE OF AN EMERGENCY CALL
911**

EVACUATION PROCEDURES

Leave the building by the Emergency Exit

- Proceed directly to your assembly point
- DO NOT stop to collect personal belongings
- DO NOT re-enter the building UNTIL informed it is safe to do so.

EVACUATION ASSEMBLY AREA



ADDRESS

**BEHAVIORAL HEALTH
CHILDREN'S TEAM 12
651 WAKE AVE, EL CENTRO, CA**



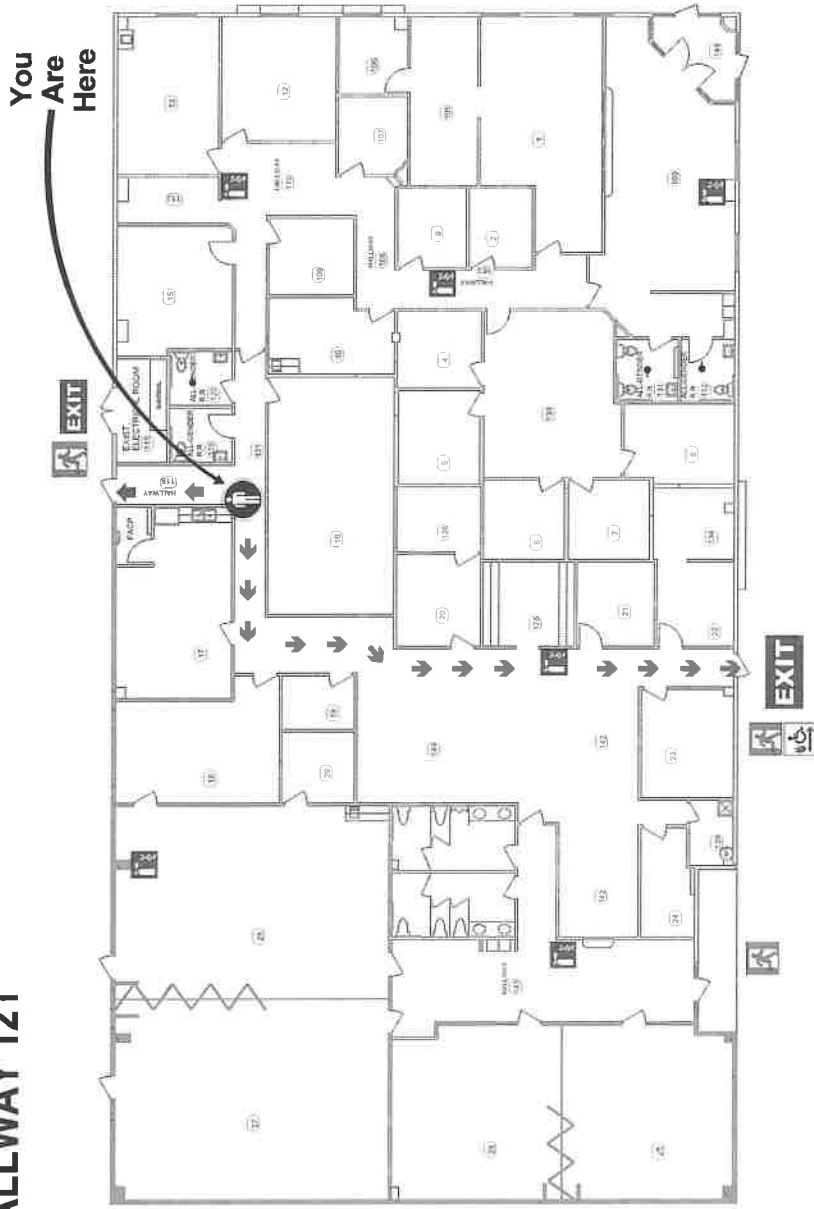
REVISED:
JL 03.09.20

LEGEND

- You Are Here
- Primary Exit Route
- Secondary Exit Route
- Emergency Exit
- Emergency Accessible Exit
- Emergency Assembly Area
- Fire Extinguisher
- Room Name & Number

EMERGENCY EVACUATION PLAN

HALLWAY 121



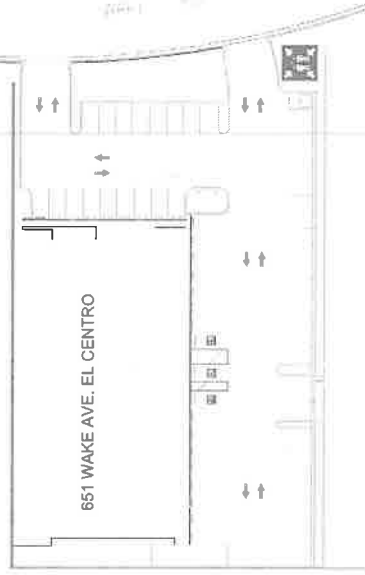
IN CASE OF AN EMERGENCY CALL

911

EVACUATION PROCEDURES

- Leave the building by the Emergency Exit
- Proceed directly to your assembly point
 - DO NOT stop to collect personal belongings
 - DO NOT re-enter the building UNTIL informed it is safe to do so.

EVACUATION ASSEMBLY AREA



ADDRESS

**BEHAVIORAL HEALTH
CENTER FOR CLINICAL TRAINING
651 WAKE AVE, EL CENTRO, CA**



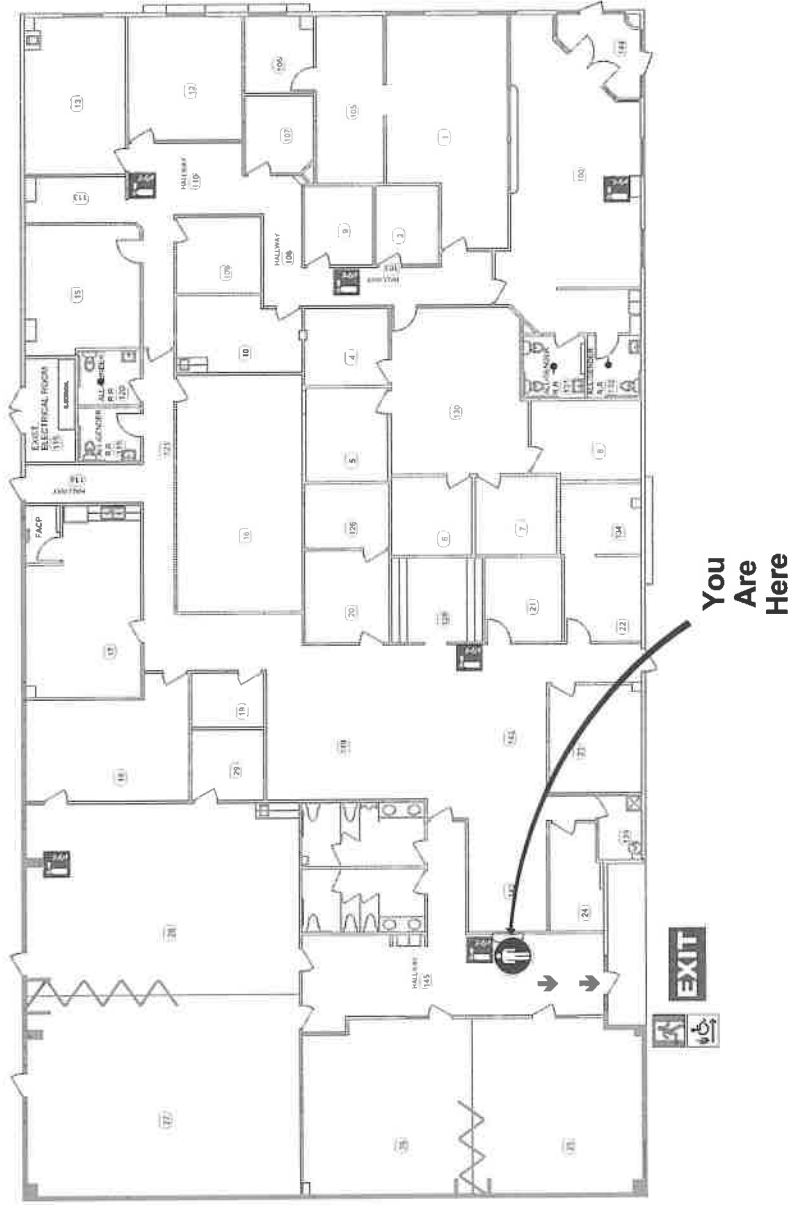
REVISED: J. 10.08.20

LEGEND

- You Are Here
- Primary Exit Route
- Secondary Exit Route
- Emergency Exit
- Emergency Accessible Exit
- Emergency Assembly Area
- Fire Extinguisher
- Room Name & Number

EMERGENCY EVACUATION PLAN

HALLWAY 145



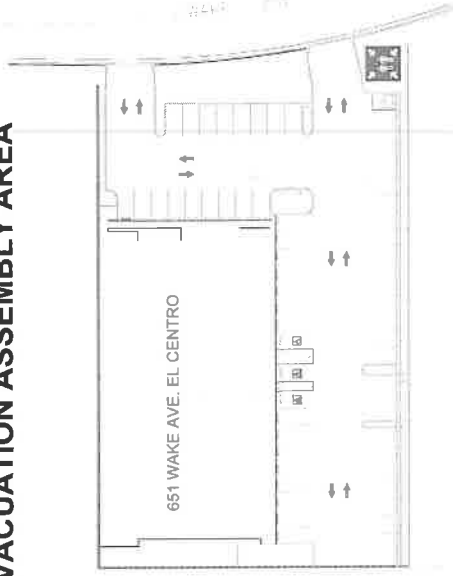
**IN CASE OF AN EMERGENCY CALL
911**

EVACUATION PROCEDURES

Leave the building by the Emergency Exit

- Proceed directly to your assembly point
- DO NOT stop to collect personal belongings
- DO NOT re-enter the building UNTIL informed it is safe to do so.

EVACUATION ASSEMBLY AREA



ADDRESS

**BEHAVIORAL HEALTH
CENTER FOR CLINICAL TRAINING
651 WAKE AVE, EL CENTRO, CA**



REVISED:
JUL 05 09 20

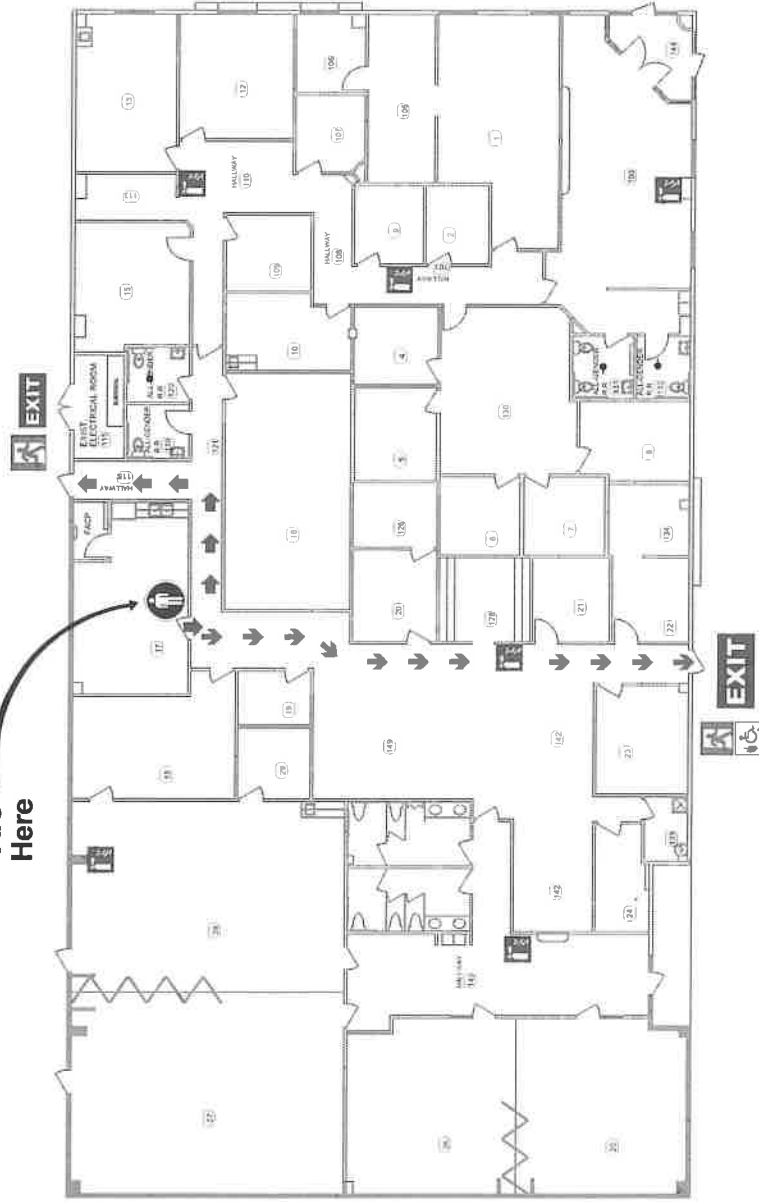
LEGEND

- You Are Here
- Primary Exit Route
- Secondary Exit Route
- Emergency Exit
- Emergency Accessible Exit
- Emergency Assembly Area
- Fire Extinguisher
- Room Name & Number

EMERGENCY EVACUATION PLAN

LOUNGE

You
Are
Here



LEGEND

- You Are Here
- Primary Exit Route
- Secondary Exit Route
- Emergency Exit
- Emergency Accessible Exit
- Emergency Assembly Area
- Fire Extinguisher
- Room Name & Number

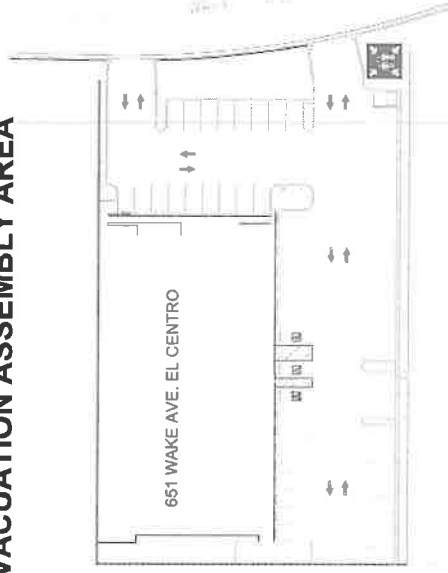
**IN CASE OF AN EMERGENCY CALL
911**

EVACUATION PROCEDURES

Leave the building by the Emergency Exit

- Proceed directly to your assembly point
- DO NOT stop to collect personal belongings
- DO NOT re-enter the building UNTIL informed it is safe to do so.

EVACUATION ASSEMBLY AREA



ADDRESS

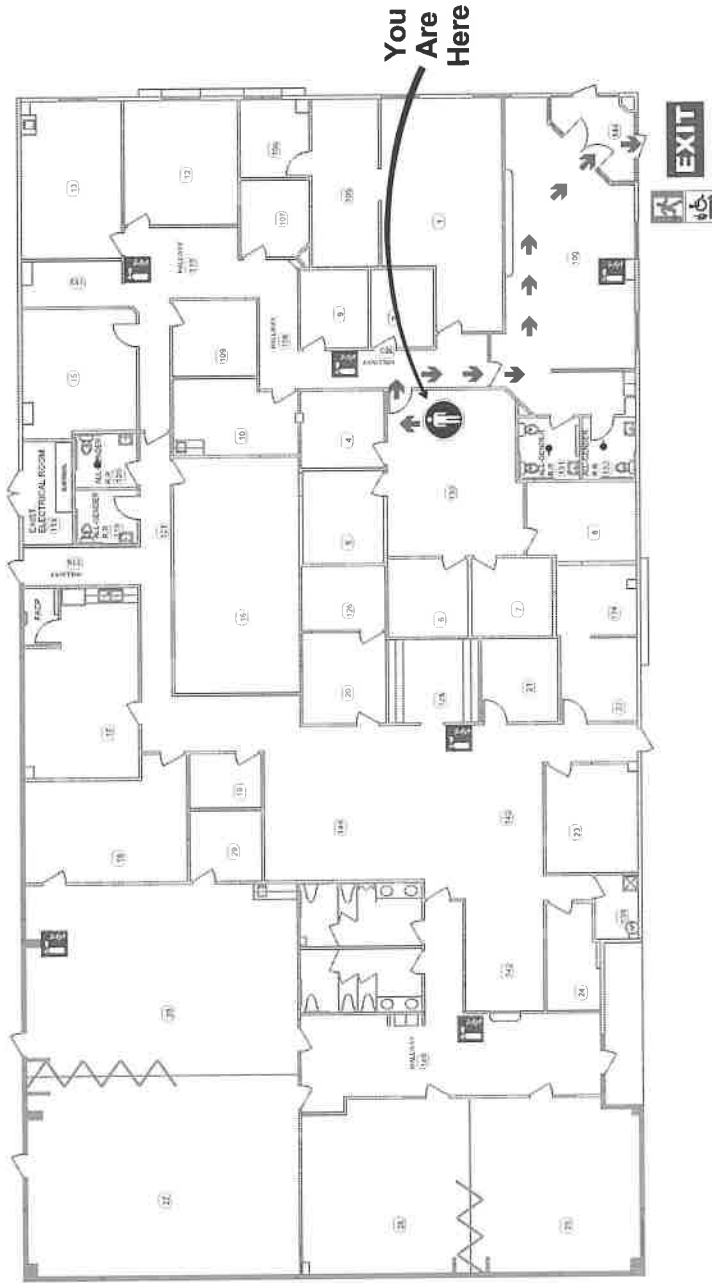
**BEHAVIORAL HEALTH
CENTER FOR CLINICAL TRAINING
651 WAKE AVE, EL CENTRO, CA**



REVISED:
JULY 20, 2010

EMERGENCY EVACUATION PLAN

PLAY ROOM



**You
Are
Here**

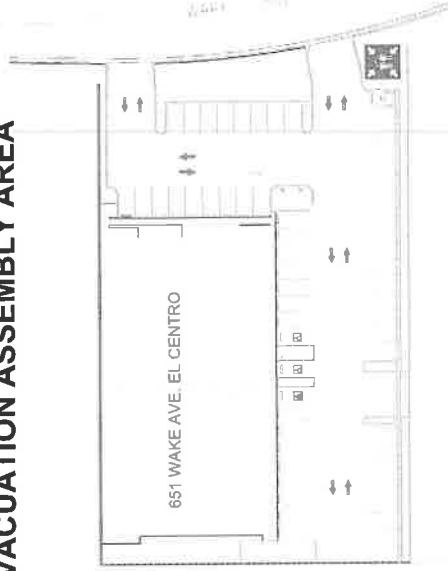
**IN CASE OF AN EMERGENCY CALL
911**

EVACUATION PROCEDURES

Leave the building by the Emergency Exit

- Proceed directly to your assembly point
- DO NOT stop to collect personal belongings
- DO NOT re-enter the building UNTIL informed it is safe to do so.

EVACUATION ASSEMBLY AREA



ADDRESS

**BEHAVIORAL HEALTH
CHILDREN'S TEAM 12
651 WAKE AVE, EL CENTRO, CA**



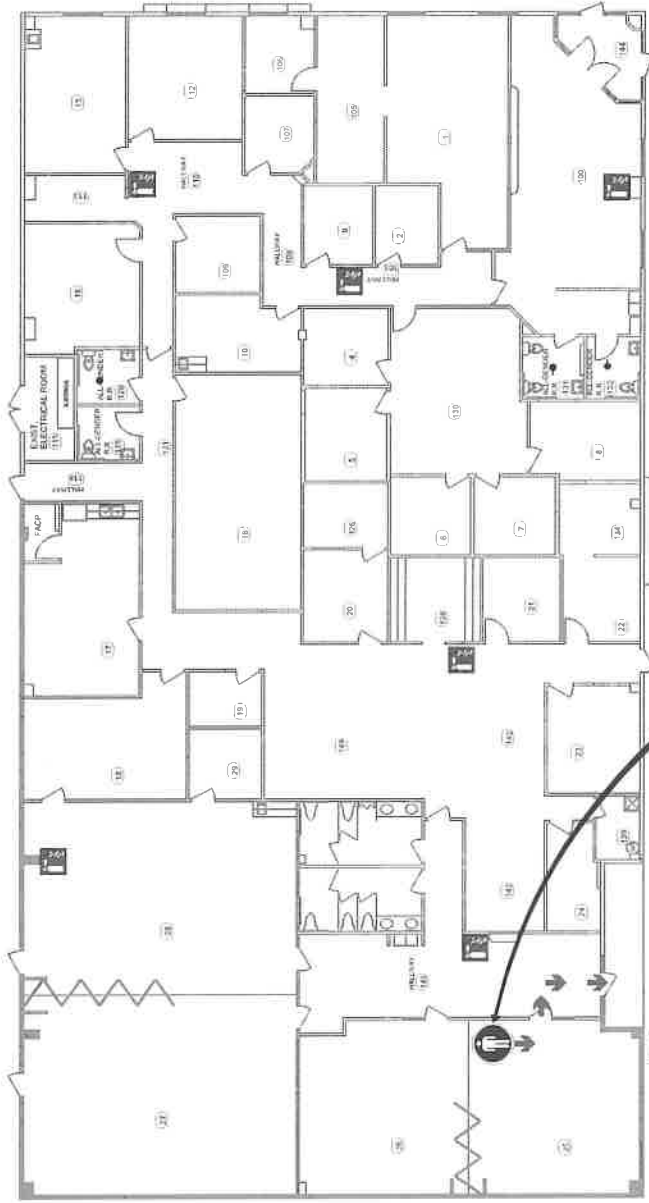
REVISED:
JL 03/09/20

LEGEND

- You Are Here
- Primary Exit Route
- Secondary Exit Route
- Fire Extinguisher
- Emergency Exit
- Emergency Accessible Exit
- Emergency Assembly Area
- Room Name & Number







EMERGENCY EVACUATION PLAN

TRAINING AREA 1



You
Are
Here

LEGEND

-  You Are Here
-  Primary Exit Route
-  Secondary Exit Route
-  Emergency Exit
-  Emergency Accessible Exit
-  Emergency Assembly Area
-  Fire Extinguisher
-  Room Name & Number

IN CASE OF AN EMERGENCY CALL

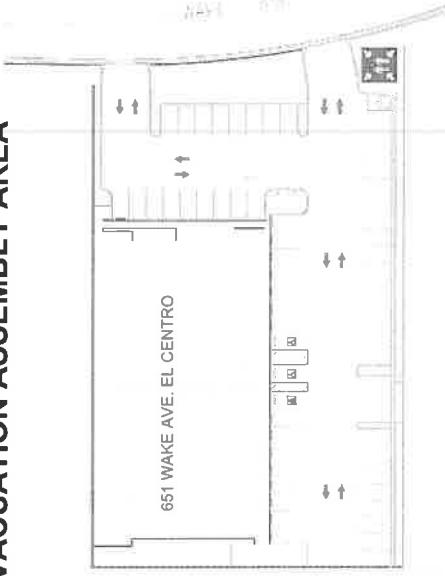
911

EVACUATION PROCEDURES

Leave the building by the Emergency Exit

- Proceed directly to your assembly point
- DO NOT stop to collect personal belongings
- DO NOT re-enter the building UNTIL informed it is safe to do so.

EVACUATION ASSEMBLY AREA



ADDRESS

**BEHAVIORAL HEALTH
CENTER FOR CLINICAL TRAINING
651 WAKE AVE, EL CENTRO, CA**

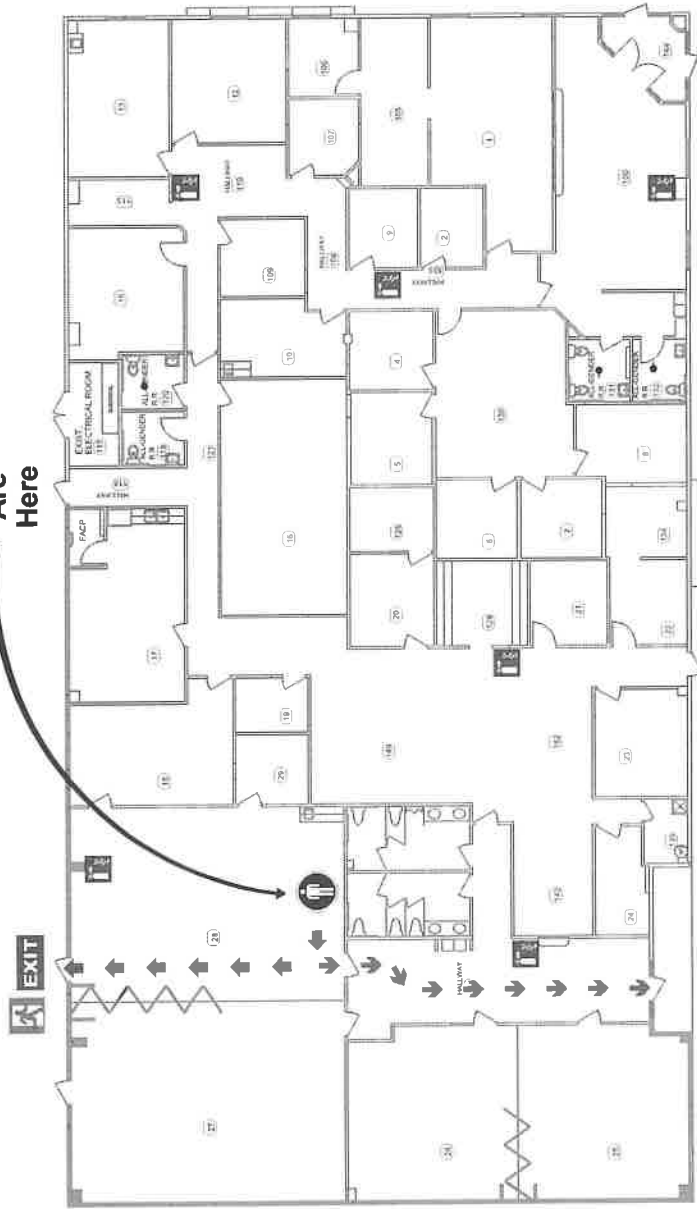


REVISED:
JUL 01/2020

EMERGENCY EVACUATION PLAN

TRAINING AREA 4

You Are Here



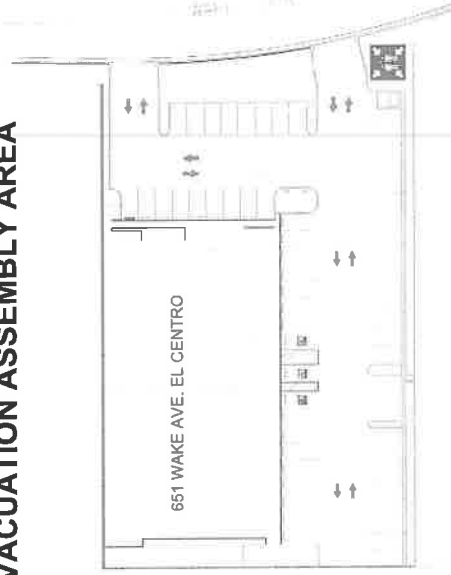
IN CASE OF AN EMERGENCY CALL 911

EVACUATION PROCEDURES

Leave the building by the Emergency Exit

- Proceed directly to your assembly point
- DO NOT stop to collect personal belongings
- DO NOT re-enter the building UNTIL informed it is safe to do so.

EVACUATION ASSEMBLY AREA



ADDRESS

**BEHAVIORAL HEALTH
CENTER FOR CLINICAL TRAINING
651 WAKE AVE, EL CENTRO, CA**



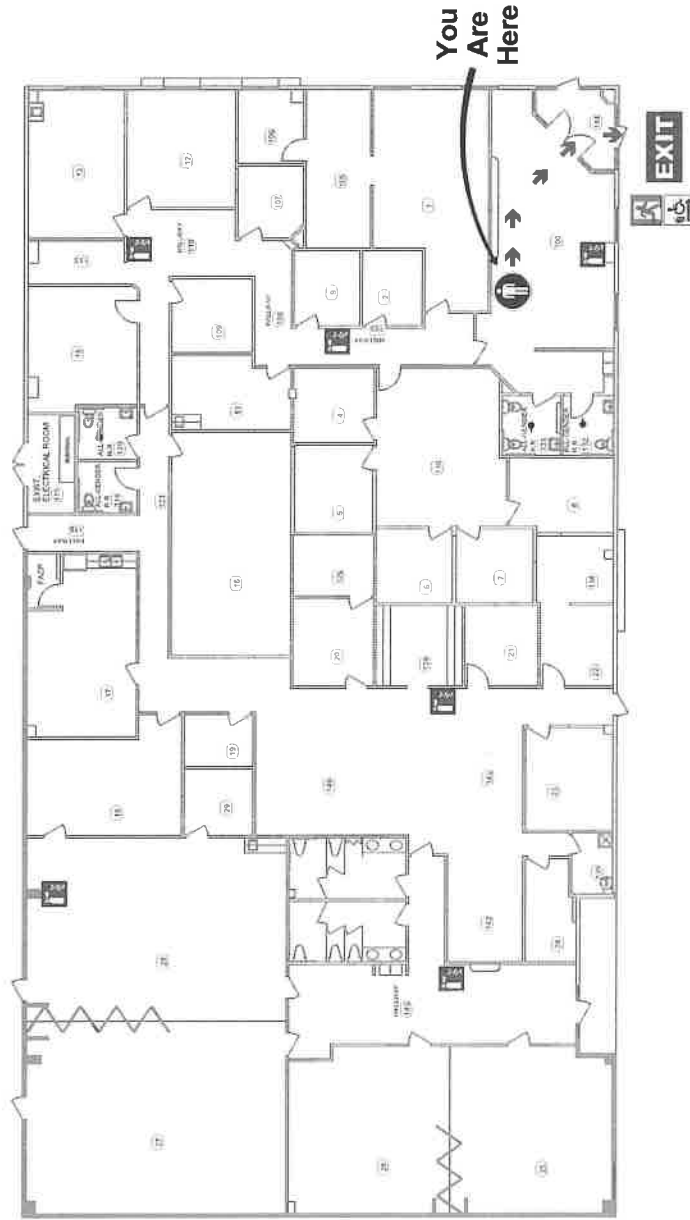
LEGEND

- You Are Here
- Primary Exit Route
- Secondary Exit Route
- Emergency Exit
- Emergency Accessible Exit
- Emergency Assembly Area
- Fire Extinguisher
- Room Name & Number

REVISED:
JL 03/09/20

EMERGENCY EVACUATION PLAN

WAITING ROOM



LEGEND

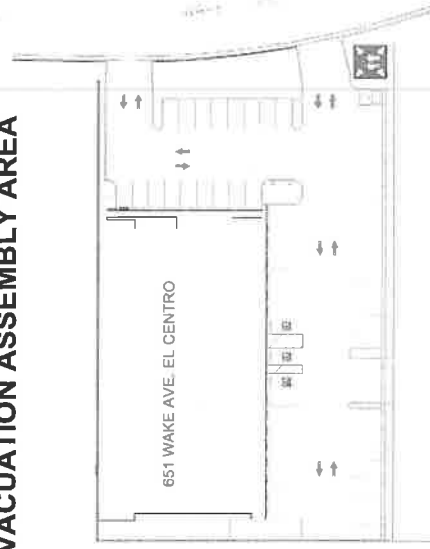
- You Are Here
- Primary Exit Route
- Secondary Exit Route
- Emergency Exit
- Emergency Accessible Exit
- Emergency Assembly Area
- Fire Extinguisher
- Room Name & Number

**IN CASE OF AN EMERGENCY CALL
911**

EVACUATION PROCEDURES

- Leave the building by the Emergency Exit
- Proceed directly to your assembly point
 - DO NOT stop to collect personal belongings
 - DO NOT re-enter the building UNTIL informed it is safe to do so.

EVACUATION ASSEMBLY AREA



ADDRESS

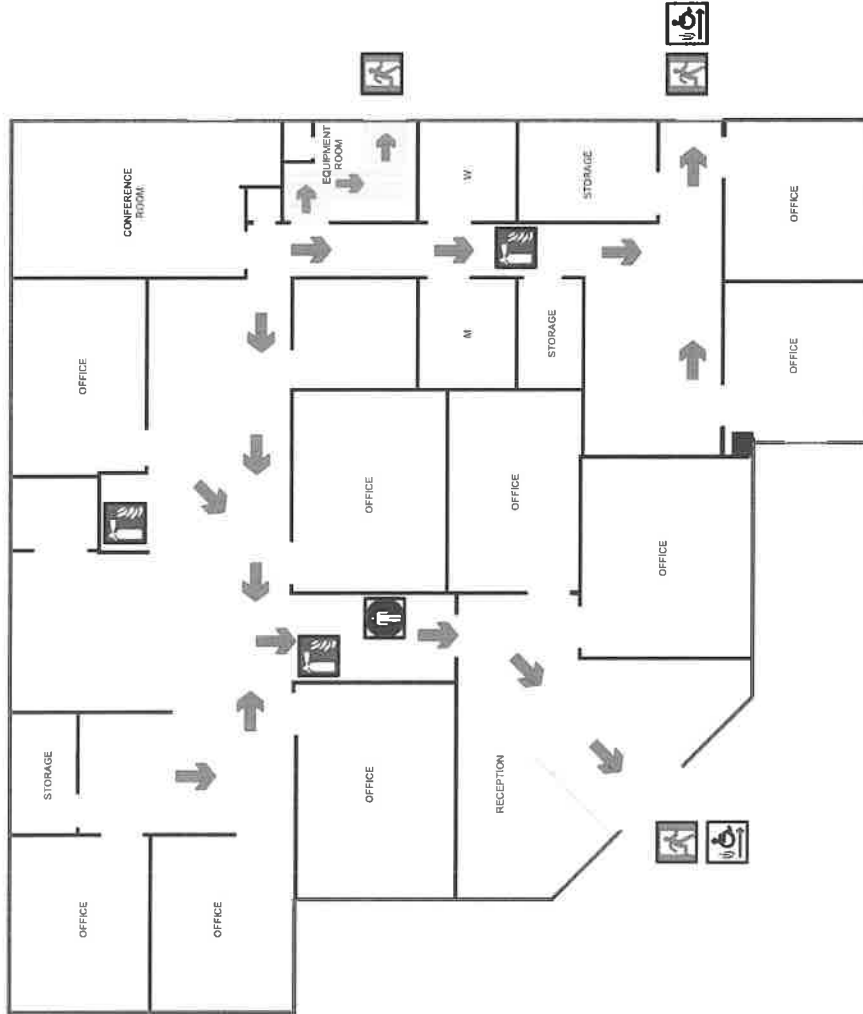
**BEHAVIORAL HEALTH
CHILDREN'S TEAM 12
651 WAKE AVE, EL CENTRO, CA**



REVISED:
J. 02.09.20

FIRE EVACUATION PLAN

BEHAVIORAL HEALTH ADMINISTRATION FIRST FLOOR



BUILDING NAME AND ADDRESS
 BEHAVIORAL HEALTH
 ADMINISTRATION
 801 BROADWAY ST
 EL CENTRO, CA 92243

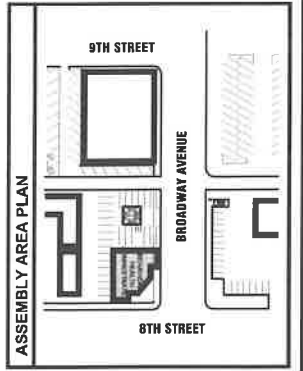
REVISIONS
 07.07.11 JS

N.T.S.

SYMBOLS KEY

	You are here		Fire alarm call point		Fire Alarm Annunciator Panel
	Primary exit route		Fire extinguisher		Elevator or lift
	Secondary exit route		Fire Hose		Stairs
	Evacuation exit route		Exit with wheelchair access		
	Emergency exit		Evacuation assembly point		

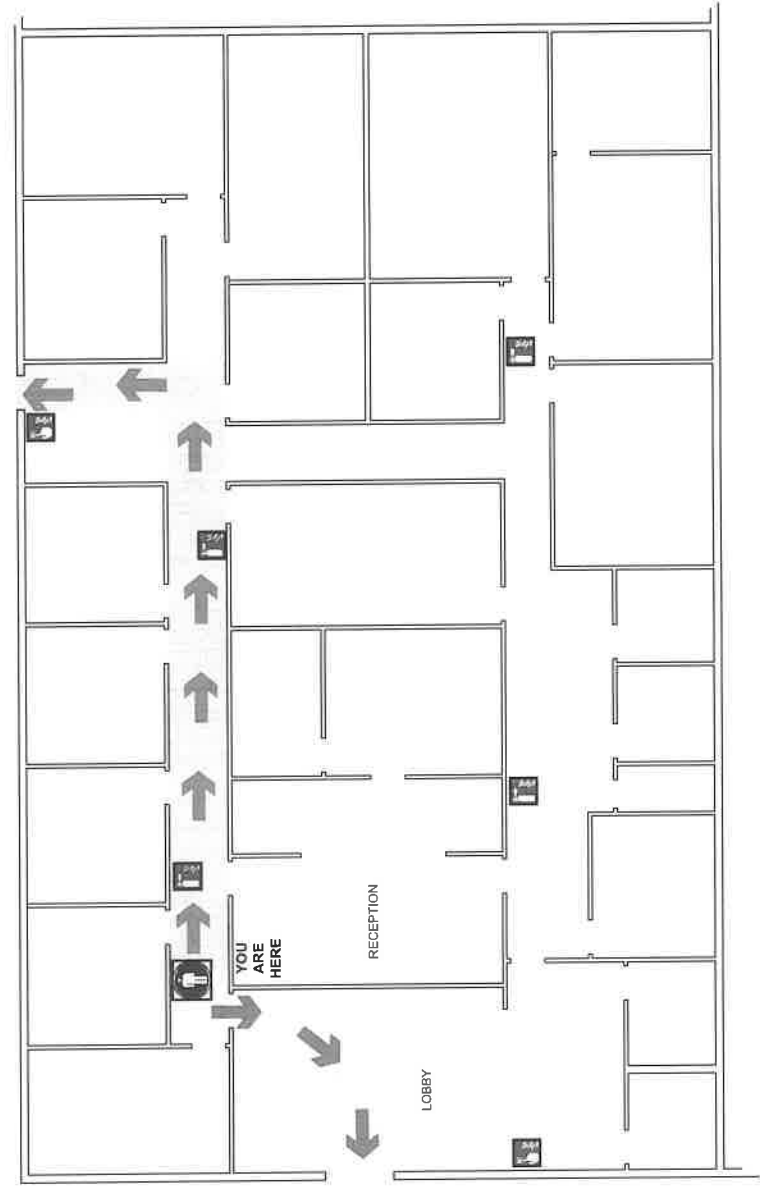
- EVACUATION PROCEDURES**
- Proceed directly to your assembly point
 - DO NOT stop to collect personal belongings
 - DO NOT use elevators or lifts
 - DO NOT re-enter the building until informed it is safe to do so.





EVACUATION PLAN

BEHAVIORAL HEALTH VALLEY PLAZA
1699 MAIN STREET, STE "A"
EL CENTRO, CA



BEHAVIORAL HEALTH VALLEY PLAZA
1699 MAIN STREET, STE "A"
EL CENTRO, CA 92243

REVISIONS
12-14-15 JG
10-17-16 JG

EVACUATION PROCEDURES

- Proceed directly to your assembly point
- DO NOT stop to collect personal belongings
- DO NOT re-enter the building until informed it is safe to do so.
- IN CASE OF EMERGENCY CALL 911

SYMBOLS KEY	
	You are here
	Primary Exit Route
	Secondary Exit Route
	Fire Extinguisher
	Fire alarm call point
	Emergency Exit
	Evacuation Assembly Point

